

DRAWING INDEX

0. KEY DRAWINGS

0.0. ELEVATION KEY DRAWINGS

- 0.0.1. SAMPLE ELEVATION
- 0.0.2. SAMPLE ELEVATION
- 0.0.3. SAMPLE ELEVATION

0.1. ISOMETRIC PROJECTION KEY DRAWINGS

- 0.1.1. SAMPLE CONFIGURATION – FULL & PARTIAL HEIGHT
- 0.1.2. SAMPLE CONFIGURATION – PARTIAL HEIGHT
- 0.1.3. SAMPLE CONFIGURATION – PARTIAL HEIGHT
- 0.1.4. SAMPLE CONFIGURATION – GLASS SLIDING DOOR
- 0.1.5. SAMPLE CONFIGURATION – WOOD SLIDING DOOR

1. PANEL INTERSECTION DETAILS

1.1. TYPICAL VERTICAL JOINT DETAILS (STANDARD)

- 1.1.1. SOLID PANEL TO SOLID PANEL
- 1.1.2. GLASS PANEL TO SOLID PANEL
- 1.1.3. DOOR PANEL TO SOLID PANEL (PIVOT SIDE)
- 1.1.4. GLASS PANEL TO GLASS PANEL
- 1.1.5. DOOR PANEL TO GLASS PANEL (PIVOT SIDE)
- 1.1.6. DOOR PANEL TO SOLID PANEL (STRIKE SIDE)
- 1.1.7. DOOR PANEL TO GLASS PANEL (STRIKE SIDE)

2. TOP/CEILING SECTIONS

2.1. TOP TRIM DETAILS (STANDARD)

- 2.1.1. SOLID PANEL AT CEILING
- 2.1.2. GLASS PANEL AT CEILING
- 2.1.3. PIVOT DOOR PANEL AT CEILING

3. BOTTOM/FLOOR SECTIONS

3.1. BASE TRIM DETAILS (STANDARD)

- 3.1.1. SOLID PANEL AT FLOOR
- 3.1.2. GLASS PANEL AT FLOOR
- 3.1.3. PIVOT DOOR PANEL AT FLOOR

4. WALL START DETAILS

4.1. SOLID PANEL TO WALL CONDITIONS

- 4.1.1. 1-3/8" [35mm] LAMINATED WALL START ADAPTER
- 4.1.2. 2" [51mm] LAMINATED WALL START ADAPTER
- 4.1.3. LAMINATED ALUMINIUM WALL START
- 4.1.4. ALUMINIUM END CAP AT GLASS PANEL
- 4.1.5. ALUMINIUM END CAP AT DOOR PANEL
- 4.1.6. LAMINATED END CAP AT GLASS PANEL

4.2. WALL END CONDITIONS

- 4.2.1. SOLID PANEL WITH ALUMINIUM END CAP
- 4.2.2. GLASS PANEL WITH ALUMINIUM END CAP

5. MODULAR CONNECTORS

5.1. 3-WAY CONNECTION

- 5.1.1. SOLID PANEL TO SOLID PANEL AT SOLID PANEL
- 5.1.2. SOLID PANEL TO GLASS PANEL AT SOLID PANEL

5.2. 3-WAY POST

- 5.2.1. SOLID PANEL TO SOLID PANEL AT SOLID PANEL (STANDARD)
- 5.2.2. DOOR PANEL TO GLASS PANEL AT SOLID PANEL (STANDARD)
- 5.2.3. DOOR PANEL TO GLASS PANEL AT SOLID PANEL (PROGRESSIVE: OPTIONAL)

5.3. 90° RADIUS CORNER POST

- 5.3.1. SOLID PANEL TO GLASS PANEL
- 5.3.2. SOLID PANEL TO DOOR PANEL

5.4. 90° SQUARE CORNER POST

- 5.4.1. SOLID PANEL TO GLASS PANEL
- 5.4.2. SOLID PANEL TO DOOR PANEL

5.5. 135° CORNER POST

- 5.5.1. SOLID PANEL TO GLASS PANEL
- 5.5.2. SOLID PANEL TO DOOR PANEL
- 5.5.3. SOLID PANEL TO SOLID PANEL

6. SPECIALTY

6.1. GLASS SLIDING DOOR DETAILS

- 6.1.1. GLASS SLIDING DOOR AT CEILING
- 6.1.2. WOOD SLIDING DOOR AT CEILING
- 6.1.3. GLASS SLIDING DOOR AT FLOOR
- 6.1.4. WOOD SLIDING DOOR AT FLOOR
- 6.1.5. GLASS SLIDING DOOR OUTSIDE JAMB
- 6.1.6. DOUBLE GLASS SLIDING DOOR (MIDDLE SASHES)
- 6.1.7. GLASS SLIDING DOOR – SOLID TRANSOM PANEL
- 6.1.8. WOOD SLIDING DOOR – SOLID TRANSOM PANEL
- 6.1.9. GLASS SLIDING DOOR – GLASS TRANSOM PANEL
- 6.1.10. SLIDING GLASS DOOR – GLASS TRANSOM PANEL
- 6.1.11. GLASS SLIDING DOOR – PULL DETAIL
- 6.1.12. GLASS SLIDING DOOR – HOOKBOLT LOCK DETAIL

6.2. TYPICAL ALL-ALUMINIUM DETAILS

- 6.2.1. GLASS PANEL TO GLASS PANEL (VERTICAL JOINT)
- 6.2.2. GLASS PANEL AT CEILING
- 6.2.3. GLASS PANEL AT FLOOR

6.3. TYPICAL REVEAL CEILING DETAILS

6.3.1. SOLID PANEL AT REVEAL CEILING

6.4. HARDWOOD DETAILS

6.4.1. SOLID PANEL TO SOLID PANEL

6.4.2. GLASS PANEL TO GLASS PANEL

6.4.3. DOOR PANEL TO GLASS PANEL (PIVOT SIDE)

6.5. ACCESSORIES

6.5.1. FURNITURE STANDARD AT PANEL JOINT

6.6. HINGE DOOR DETAILS

6.6.1. DOOR PANEL TO SOLID PANEL (HINGE SIDE)

6.6.2. DOOR PANEL TO SOLID PANEL (STRIKE SIDE)

6.6.3. HINGE DOOR PANEL AT CEILING

6.6.4. SOLID PANEL OVER HINGE DOOR PANEL

6.6.5. GLASS PANEL OVER HINGE DOOR PANEL

7. ELECTRICAL DETAILS

7.1. ELECTRICAL PANEL – INTEGRAL CABLE DROPS

7.1.1. SINGLE SIDED SPECIFICATION

7.1.2. DOUBLE SIDED SPECIFICATION

7.2. ELECTRICAL CHASE VERTICAL POST

7.2.1. SOLID PANEL TO SOLID PANEL

7.3. ELECTRICAL CHASE HORIZONTAL POST

7.3.1. GLASS PANEL OVER SOLID PANEL

8. STACKED & RAIL-HEIGHT PANEL DETAILS

8.1. PROGRESSIVE VERTICAL JOINT DETAILS

8.1.1. SOLID PANEL TO SOLID PANEL

8.1.2. SOLID PANEL TO GLASS PANEL

8.1.3. SOLID PANEL TO DOOR PANEL

8.2. ALUMINIUM TOP CAP

8.2.1. ALUMINIUM TOP CAP OVER SOLID PANEL

8.2.2. ALUMINIUM TOP CAP OVER GLASS PANEL

8.2.3. ALUMINIUM TOP CAP OVER DOOR PANEL

8.3. HORIZONTAL JOINT DETAILS

8.3.1. SOLID PANEL OVER SOLID PANEL

8.3.2. SOLID PANEL OVER GLASS PANEL

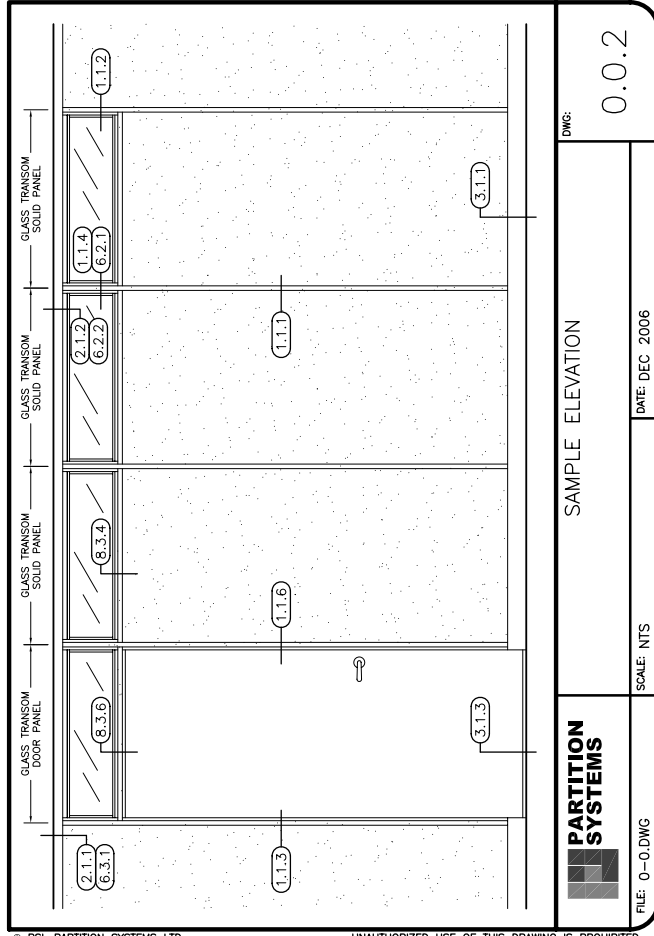
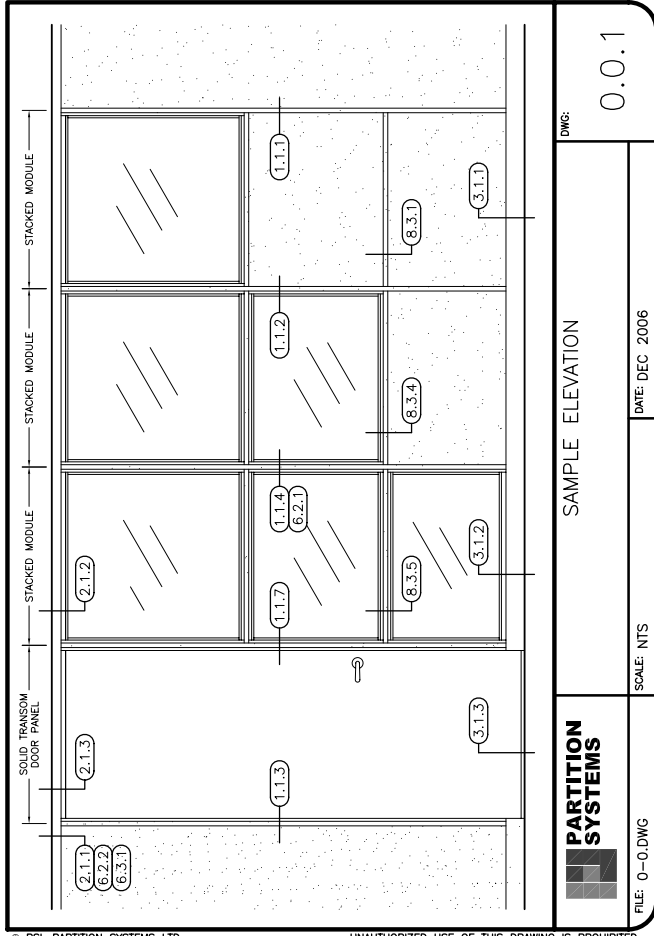
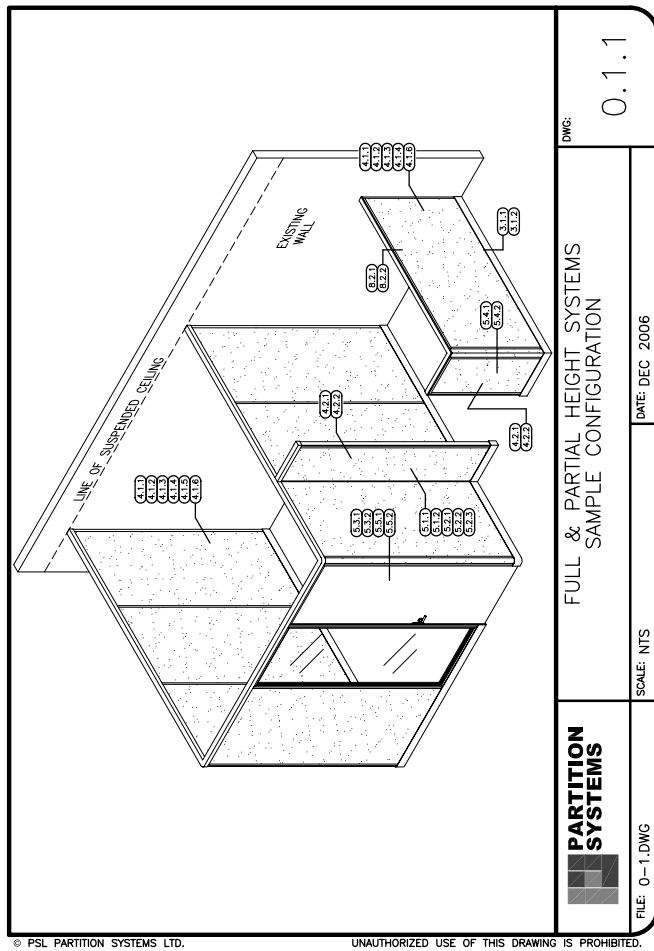
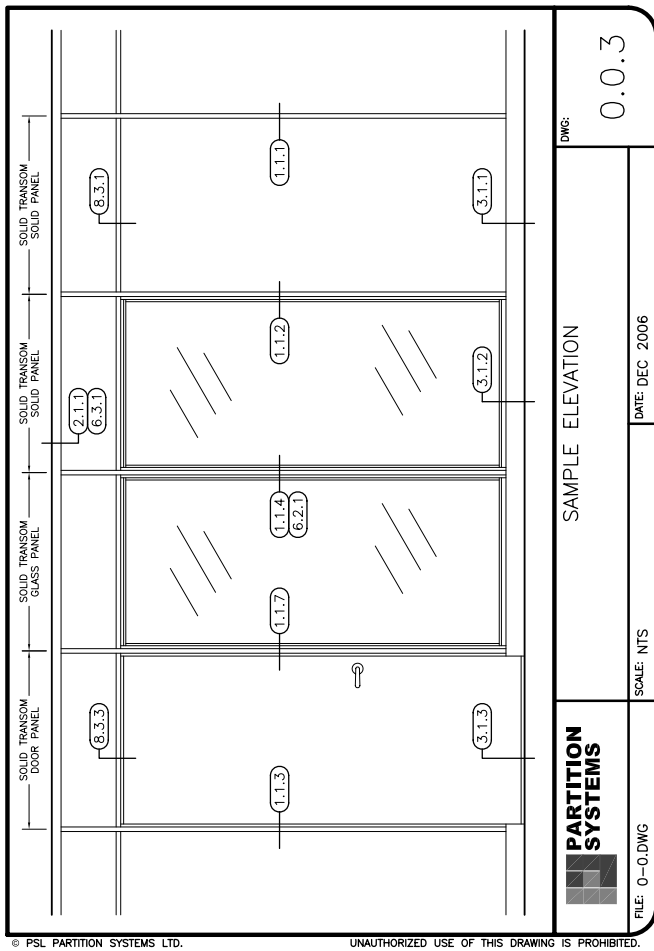
8.3.3. SOLID PANEL OVER DOOR PANEL

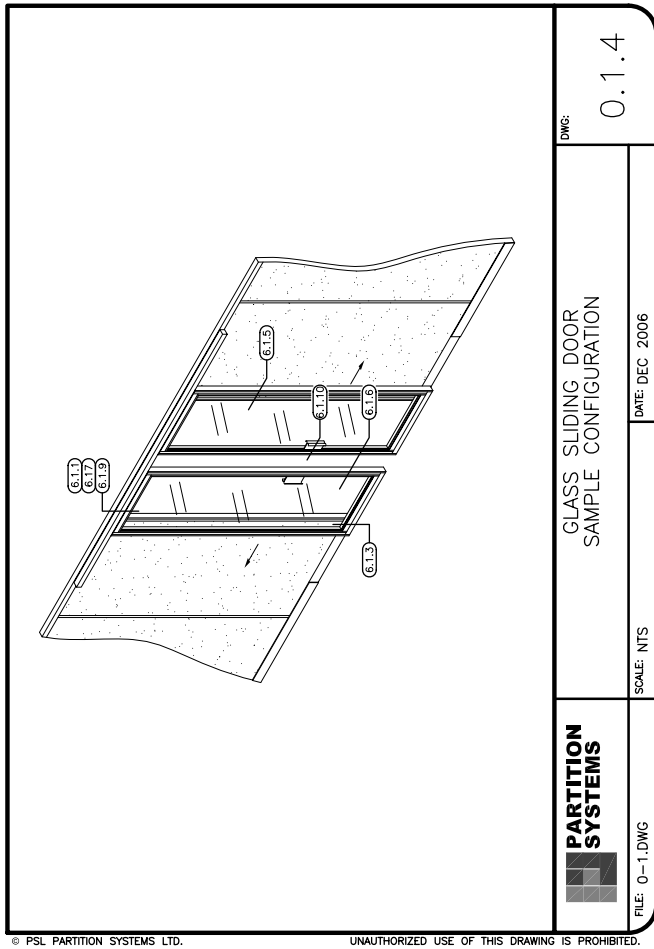
8.3.4. GLASS PANEL OVER SOLID PANEL

8.3.5. GLASS PANEL OVER GLASS PANEL

8.3.6. GLASS PANEL OVER DOOR PANEL

- 8.4. ELECTRICAL CHASE HORIZONTAL POST
 - 8.4.1. SOLID PANEL OVER SOLID PANEL
 - 8.4.2. SOLID PANEL OVER GLASS PANEL
 - 8.4.3. GLASS PANEL OVER SOLID PANEL
 - 8.4.4. GLASS PANEL OVER GLASS PANEL





© PSL PARTITION SYSTEMS LTD.

UNAUTHORIZED USE OF THIS DRAWING IS PROHIBITED.



FILE: 0-1.DWG

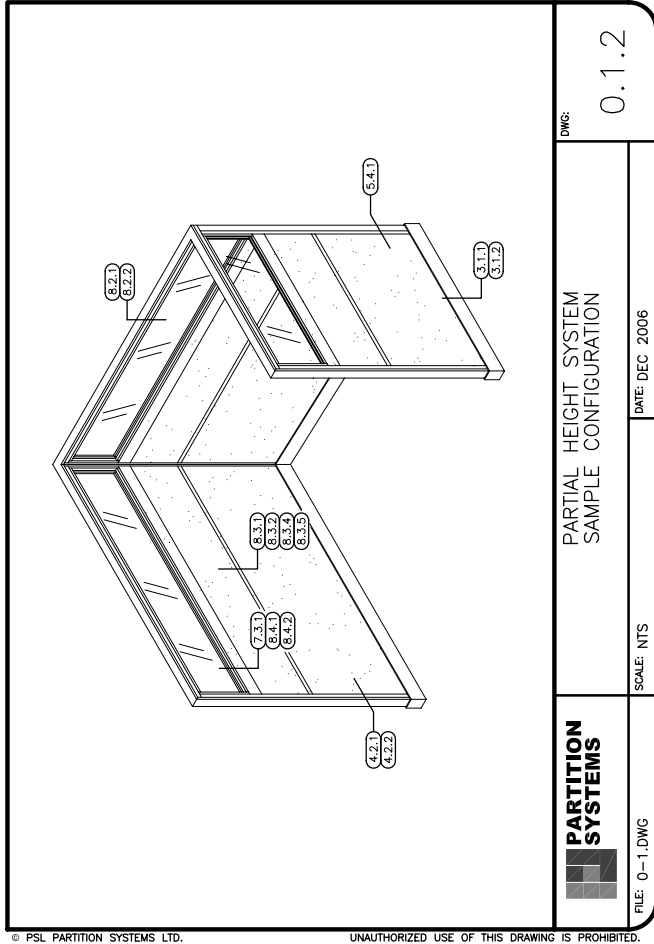
SCALE: NTS

DATE: DEC 2006

GLASS SLIDING DOOR
SAMPLE CONFIGURATION

DWG:

0.1.4



© PSL PARTITION SYSTEMS LTD.

UNAUTHORIZED USE OF THIS DRAWING IS PROHIBITED.



FILE: 0-1.DWG

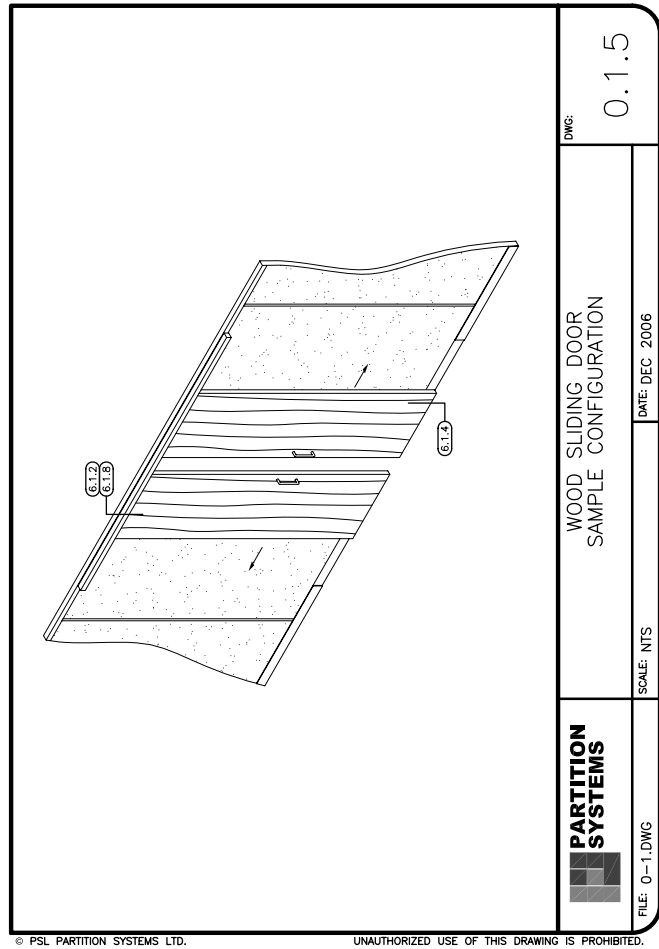
SCALE: NTS

DATE: DEC 2006

PARTIAL HEIGHT SYSTEM
SAMPLE CONFIGURATION

DWG:

0.1.2



© PSL PARTITION SYSTEMS LTD.

UNAUTHORIZED USE OF THIS DRAWING IS PROHIBITED.



FILE: 0-1.DWG

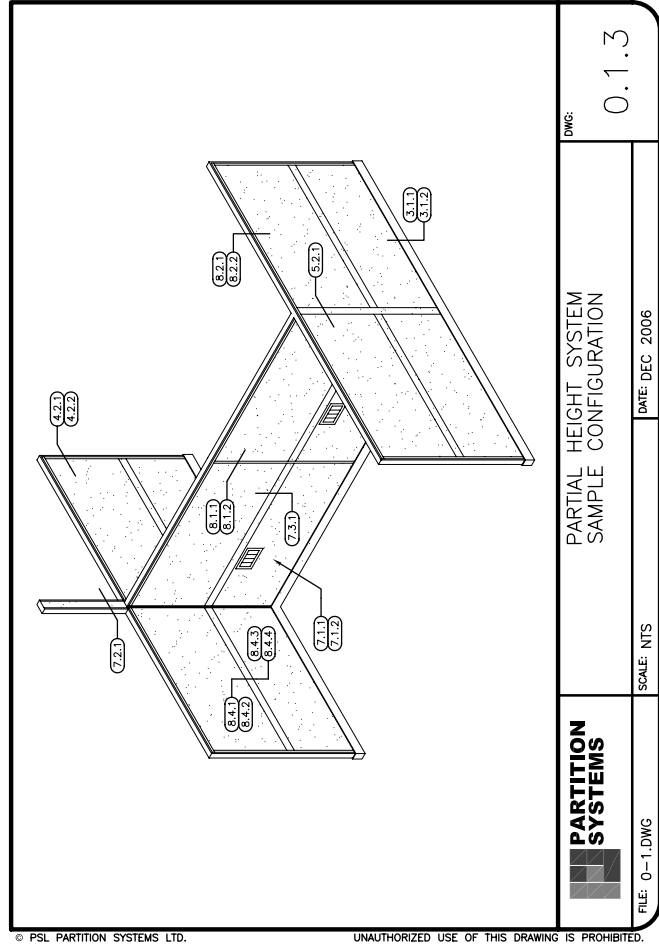
SCALE: NTS

DATE: DEC 2006

WOOD SLIDING DOOR
SAMPLE CONFIGURATION

DWG:

0.1.5



© PSL PARTITION SYSTEMS LTD.

UNAUTHORIZED USE OF THIS DRAWING IS PROHIBITED.



FILE: 0-1.DWG

SCALE: NTS

DATE: DEC 2006

PARTIAL HEIGHT SYSTEM
SAMPLE CONFIGURATION

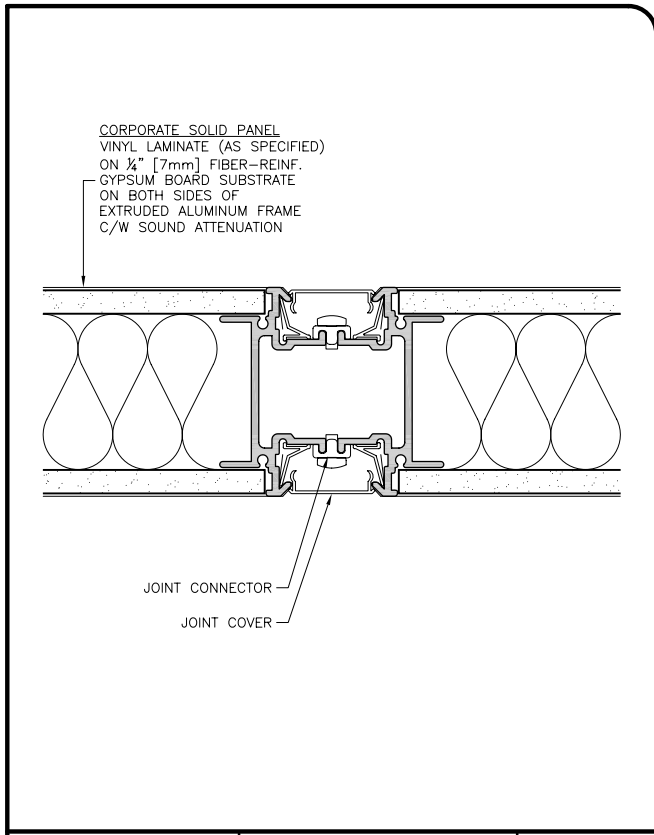
DWG:

0.1.3

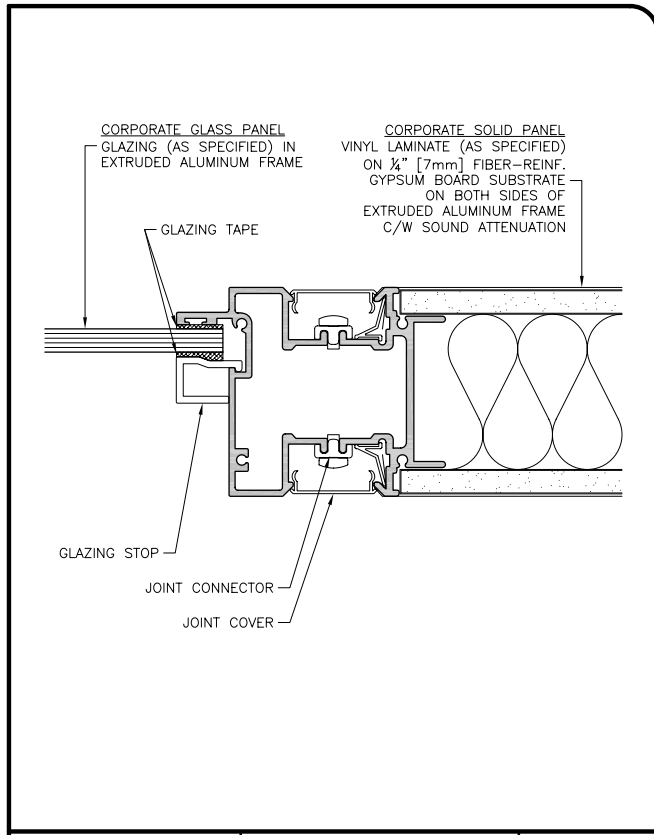
CORPORATE SERIES

STANDARD
DETAILS

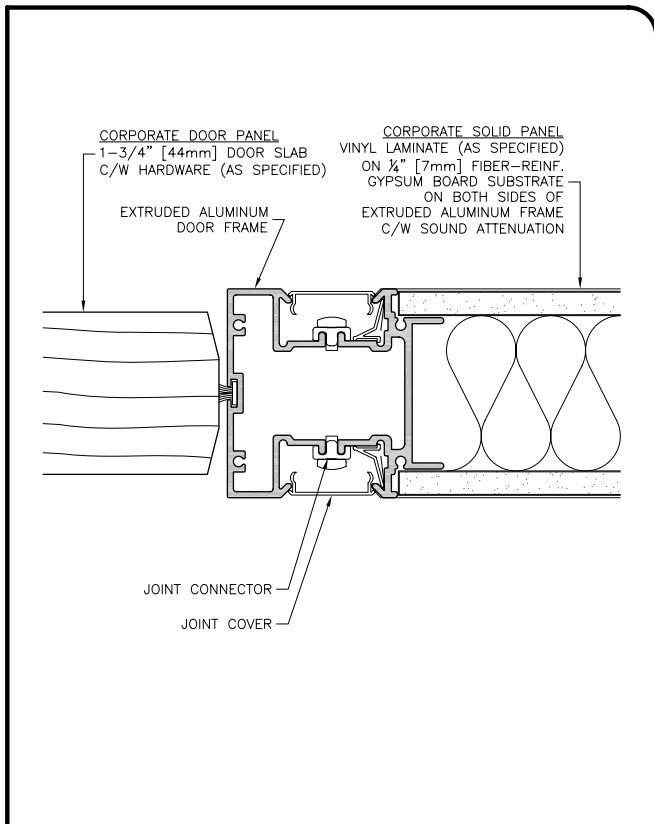




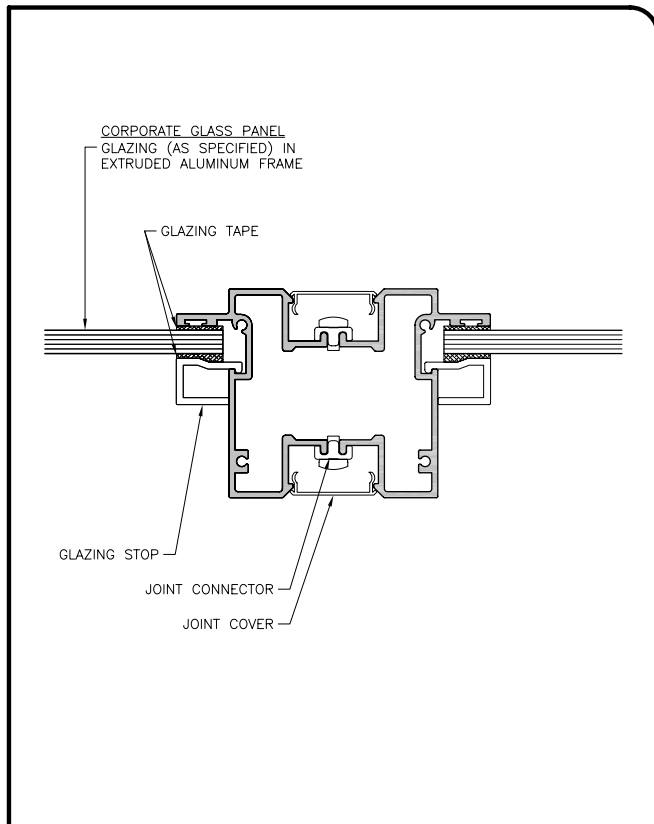
	SOLID PANEL SOLID PANEL (STANDARD)	DWG:	1.1.1
		FILE: 1-1.DWG	
<small>© PSL PARTITION SYSTEMS LTD. UNAUTHORIZED USE OF THIS DRAWING IS PROHIBITED.</small>			



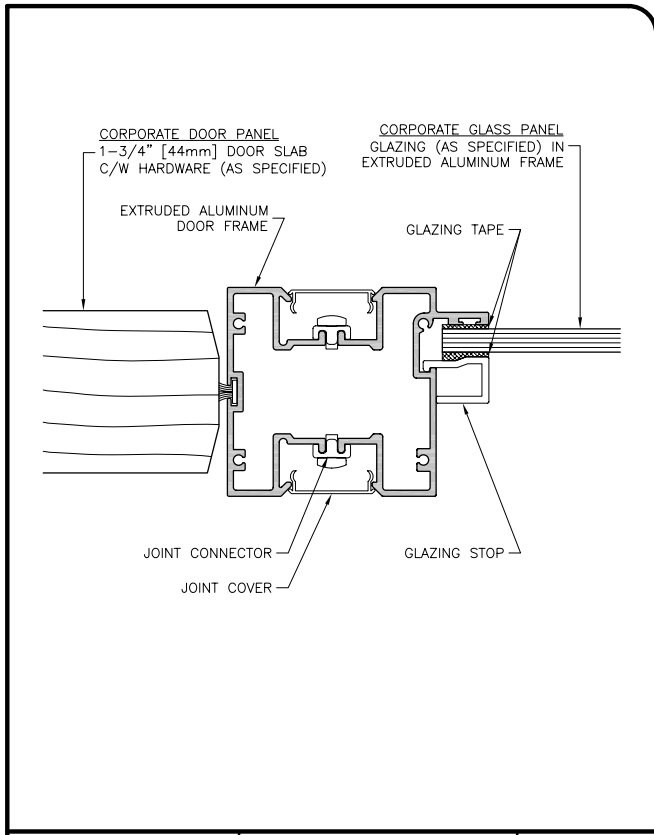
	GLASS PANEL SOLID PANEL (STANDARD)	DWG:	1.1.2
		FILE: 1-1.DWG	
<small>© PSL PARTITION SYSTEMS LTD. UNAUTHORIZED USE OF THIS DRAWING IS PROHIBITED.</small>			



	DOOR PANEL SOLID PANEL PIVOT SIDE (STANDARD)	DWG:	1.1.3
		FILE: 1-1.DWG	
<small>© PSL PARTITION SYSTEMS LTD. UNAUTHORIZED USE OF THIS DRAWING IS PROHIBITED.</small>			

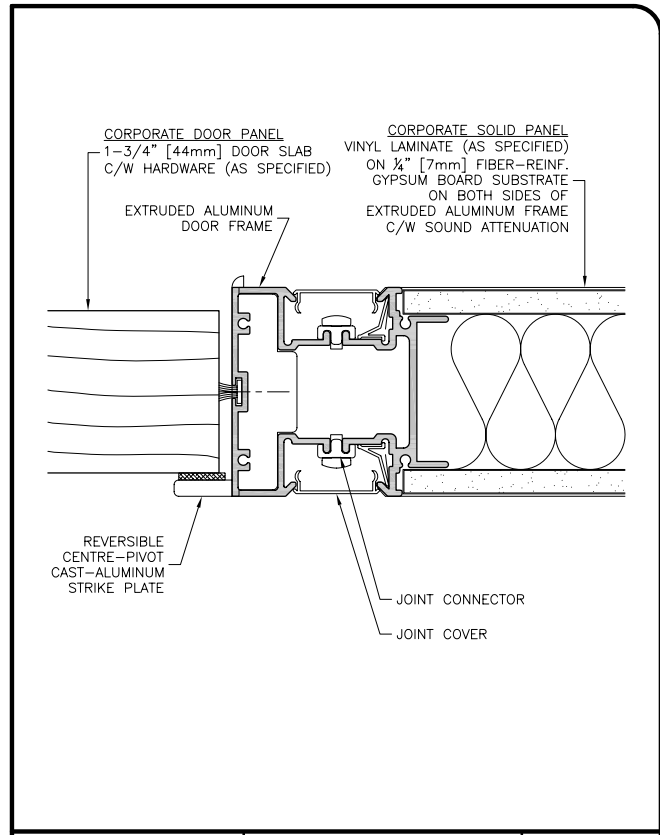


	GLASS PANEL GLASS PANEL (STANDARD)	DWG:	1.1.4
		FILE: 1-1.DWG	
<small>© PSL PARTITION SYSTEMS LTD. UNAUTHORIZED USE OF THIS DRAWING IS PROHIBITED.</small>			



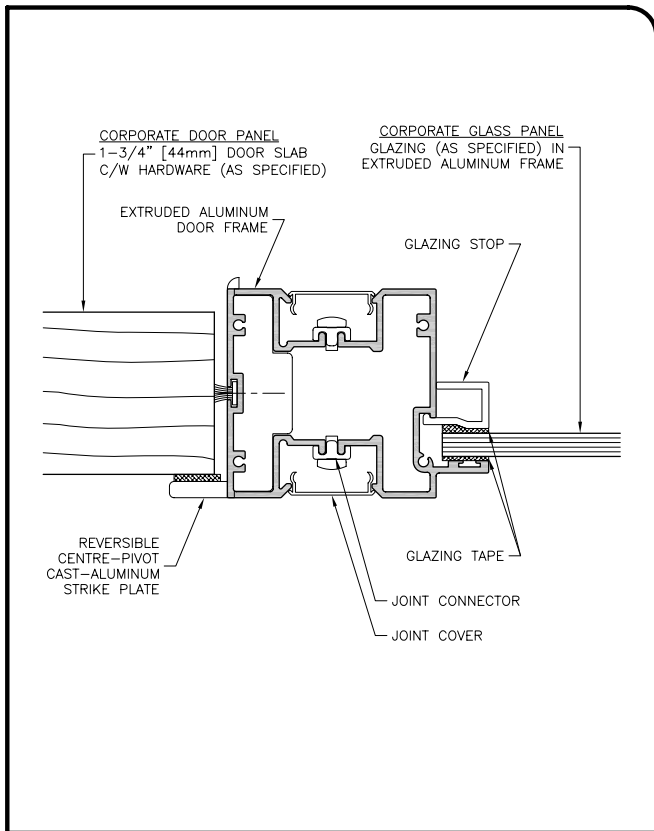
	DOOR PANEL GLASS PANEL PIVOT SIDE (STANDARD)	DWG:	1.1.5
		FILE: 1-1.DWG	

© PSL PARTITION SYSTEMS LTD. UNAUTHORIZED USE OF THIS DRAWING IS PROHIBITED.



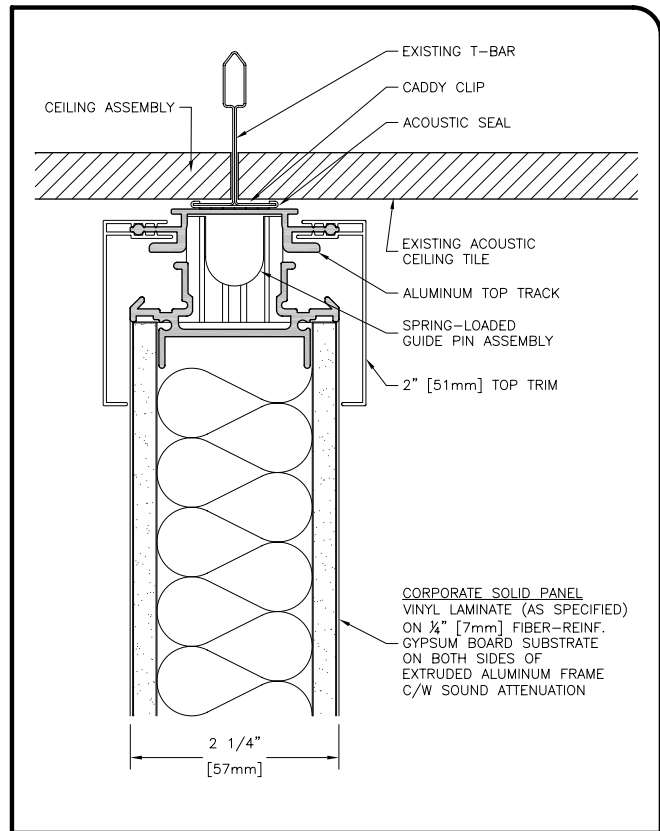
	DOOR PANEL SOLID PANEL STRIKE SIDE (STANDARD)	DWG:	1.1.6
		FILE: 1-1.DWG	

© PSL PARTITION SYSTEMS LTD. UNAUTHORIZED USE OF THIS DRAWING IS PROHIBITED.



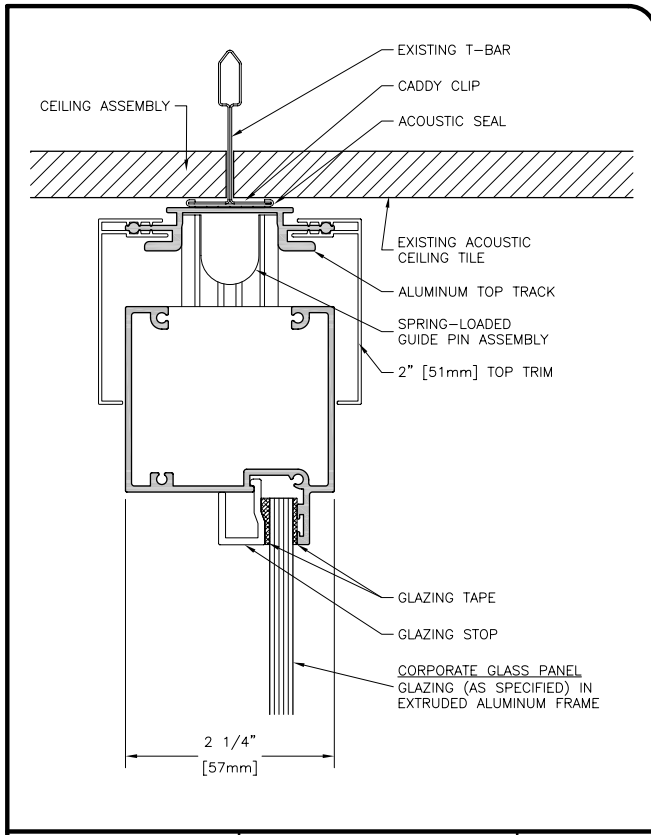
	DOOR PANEL GLASS PANEL STRIKE SIDE (STANDARD)	DWG:	1.1.7
		FILE: 1-1.DWG	

© PSL PARTITION SYSTEMS LTD. UNAUTHORIZED USE OF THIS DRAWING IS PROHIBITED.

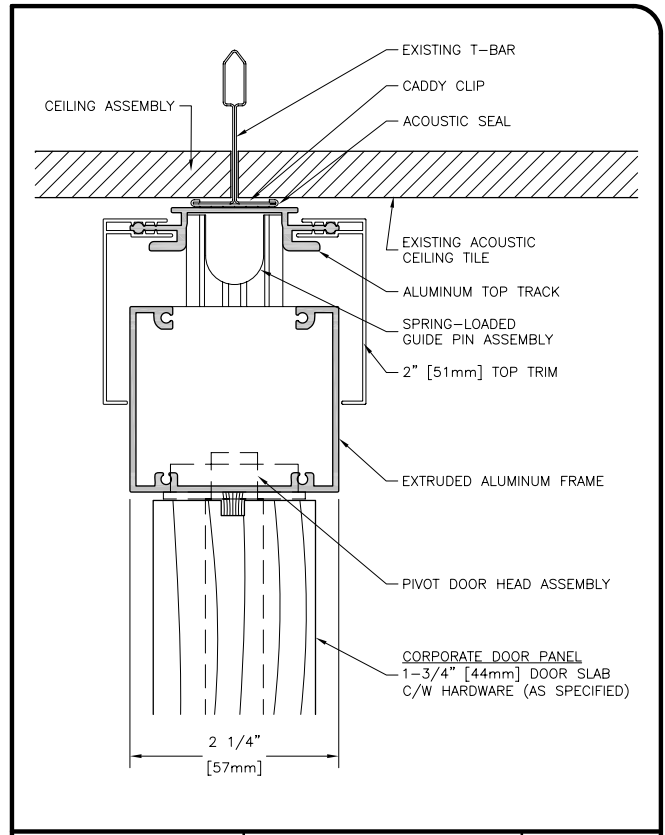


	SOLID PANEL AT CEILING (STANDARD)	DWG:	2.1.1
		FILE: 2-1.DWG	

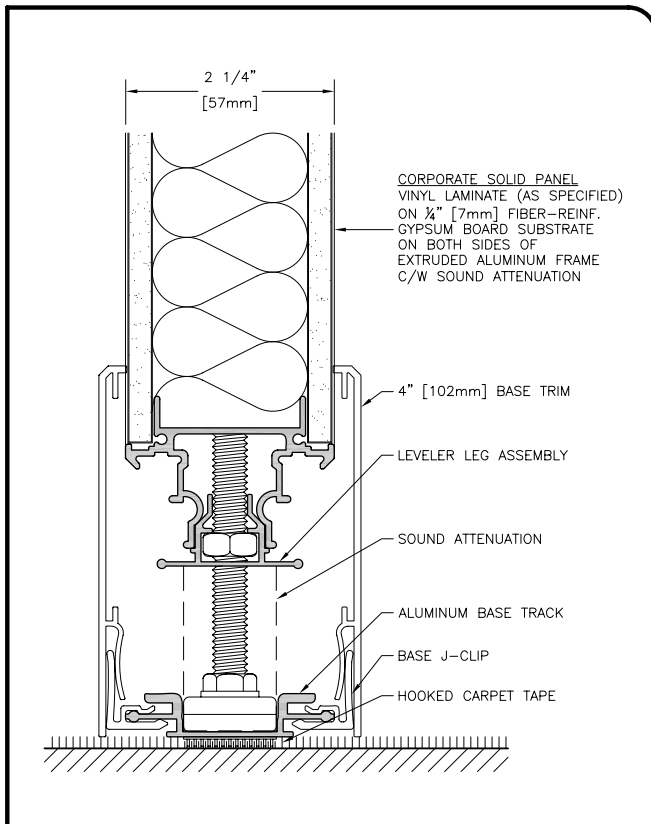
© PSL PARTITION SYSTEMS LTD. UNAUTHORIZED USE OF THIS DRAWING IS PROHIBITED.



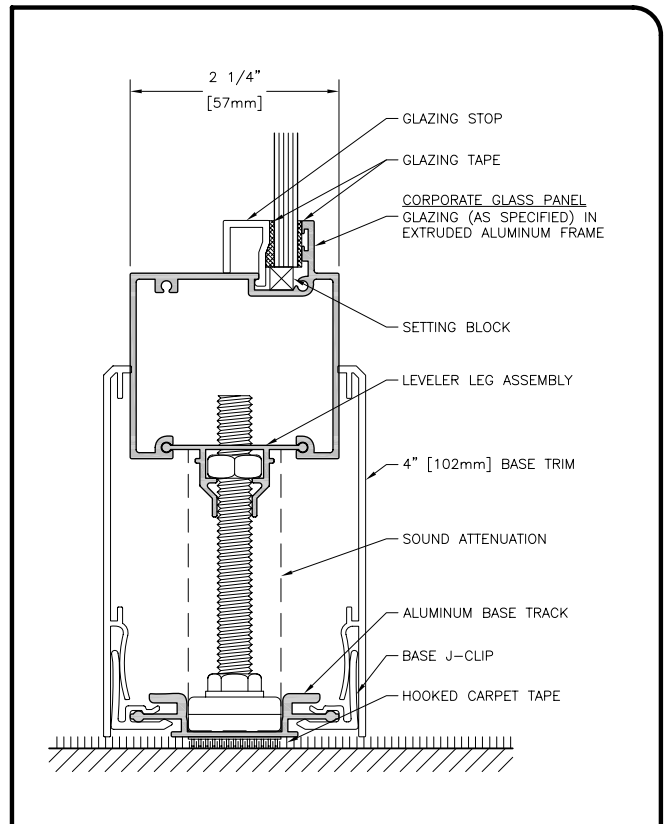
	GLASS PANEL AT CEILING (STANDARD)	DWG:	2.1.2
		FILE: 2-1.DWG SCALE: 1 : 1 DATE: NOV 2006	
<small>© PSL PARTITION SYSTEMS LTD. UNAUTHORIZED USE OF THIS DRAWING IS PROHIBITED.</small>			



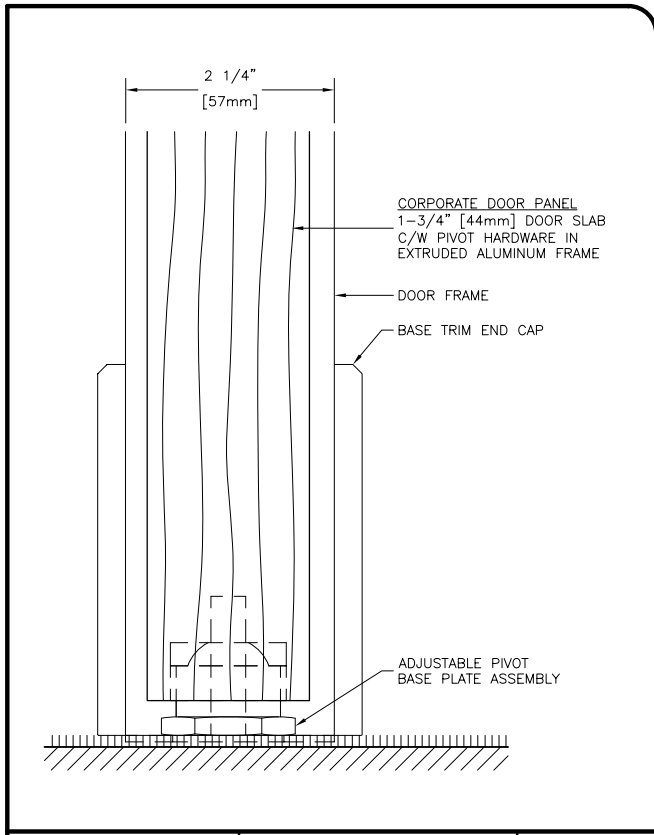
	PIVOT DOOR PANEL AT CEILING (STANDARD)	DWG:	2.1.3
		FILE: 2-1.DWG SCALE: 1 : 1 DATE: NOV 2006	
<small>© PSL PARTITION SYSTEMS LTD. UNAUTHORIZED USE OF THIS DRAWING IS PROHIBITED.</small>			



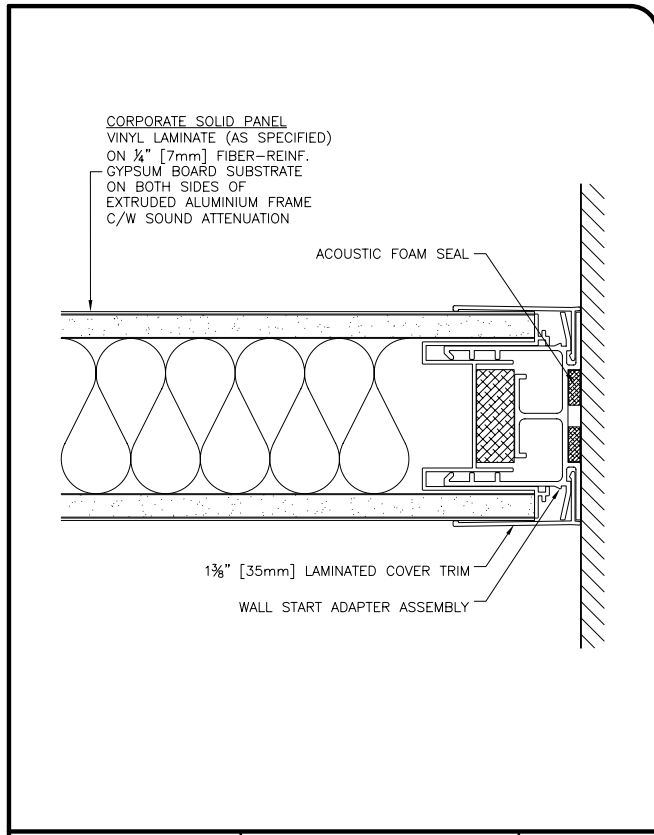
	SOLID PANEL AT FLOOR (STANDARD)	DWG:	3.1.1
		FILE: 3-1.DWG SCALE: 1 : 1 DATE: JAN 2003	
<small>© PSL PARTITION SYSTEMS LTD. UNAUTHORIZED USE OF THIS DRAWING IS PROHIBITED.</small>			



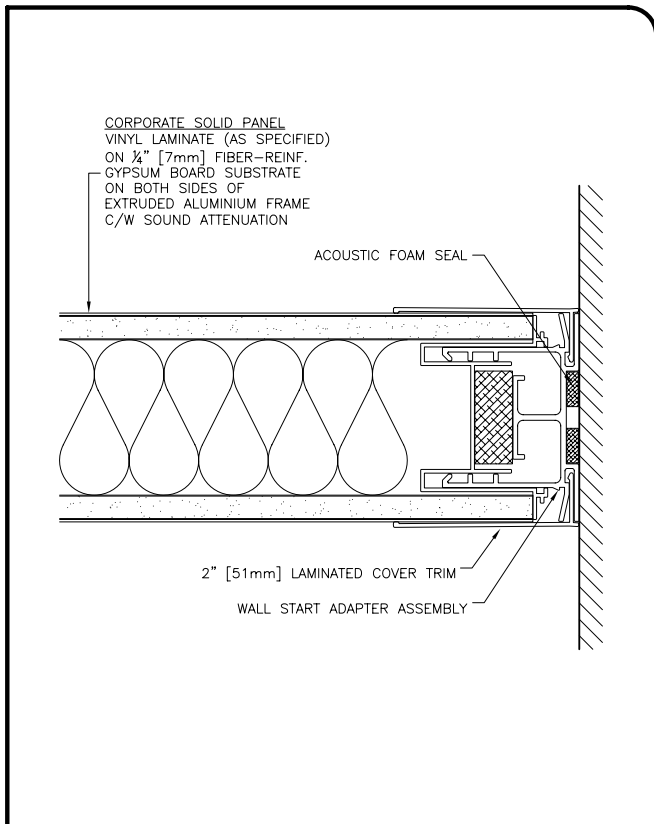
	GLASS PANEL AT FLOOR (STANDARD)	DWG:	3.1.2
		FILE: 3-1.DWG SCALE: 1 : 1 DATE: JAN 2003	
<small>© PSL PARTITION SYSTEMS LTD. UNAUTHORIZED USE OF THIS DRAWING IS PROHIBITED.</small>			



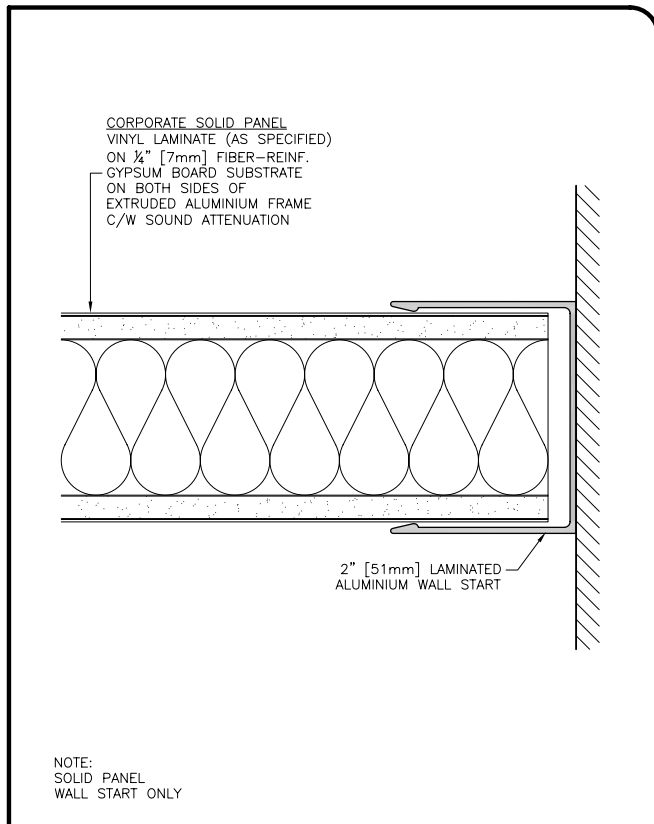
	PARTITION SYSTEMS PIVOT DOOR PANEL AT FLOOR (STANDARD)	DWG:	3.1.3
		FILE: 3-1.DWG SCALE: 1 : 1 DATE: JAN 2003	
<small>© PSL PARTITION SYSTEMS LTD. UNAUTHORIZED USE OF THIS DRAWING IS PROHIBITED.</small>			



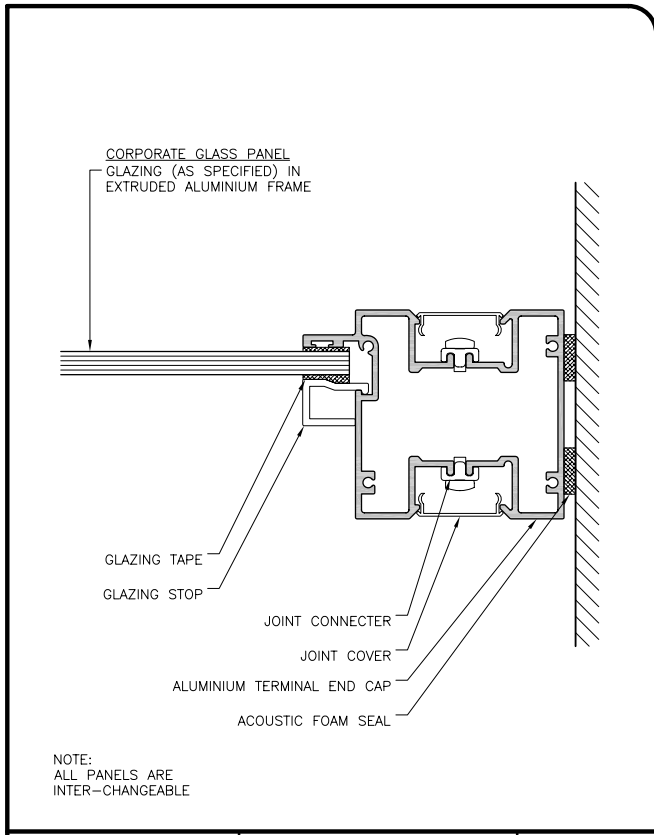
	PARTITION SYSTEMS WALL START AT SOLID 1-3/8" LAMINATED TRIM (STANDARD)	DWG:	4.1.1
		FILE: 4-1.DWG SCALE: 1 : 1 DATE: JAN 2003	
<small>© PSL PARTITION SYSTEMS LTD. UNAUTHORIZED USE OF THIS DRAWING IS PROHIBITED.</small>			



	PARTITION SYSTEMS WALL START 2" LAMINATED TRIM (OPTIONAL)	DWG:	4.1.2
		FILE: 4-1.DWG SCALE: 1 : 1 DATE: JAN 2003	
<small>© PSL PARTITION SYSTEMS LTD. UNAUTHORIZED USE OF THIS DRAWING IS PROHIBITED.</small>			

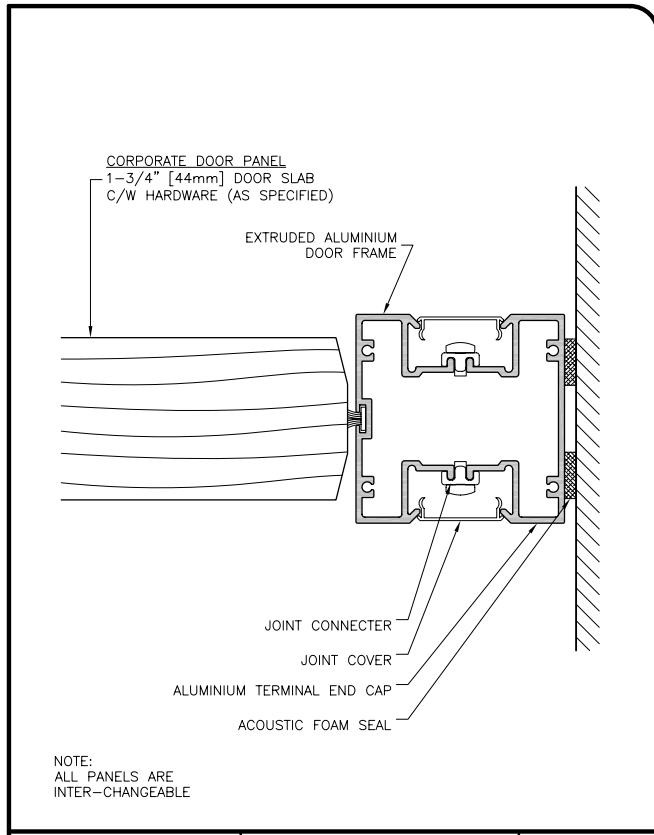


	PARTITION SYSTEMS WALL START ALUMINIUM WALL START (OPTIONAL)	DWG:	4.1.3
		FILE: 4-1.DWG SCALE: 1 : 1 DATE: JAN 2003	
<small>© PSL PARTITION SYSTEMS LTD. UNAUTHORIZED USE OF THIS DRAWING IS PROHIBITED.</small>			



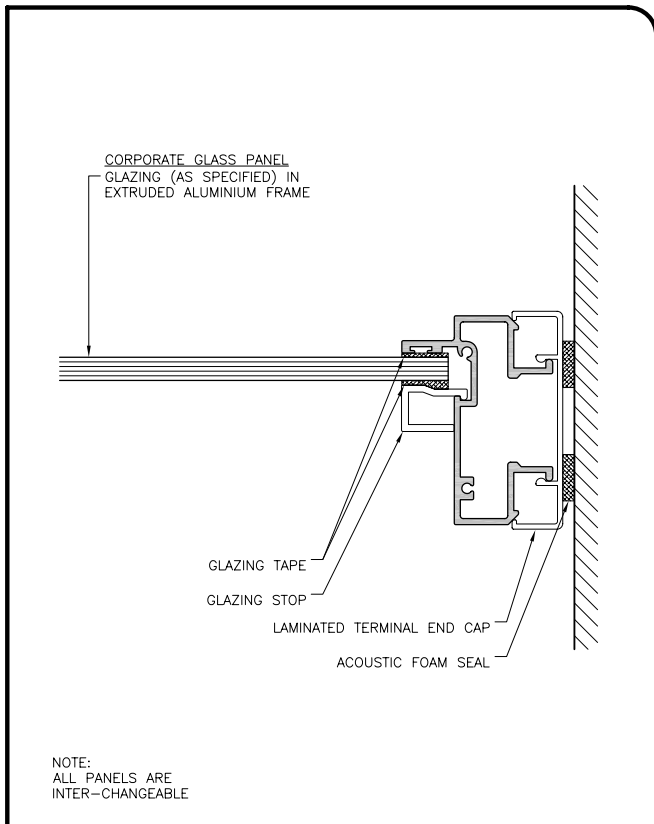
	WALL START AT GLASS ALUMINIUM END CAP (STANDARD)	DWG: 4.1.4

© PSL PARTITION SYSTEMS LTD. UNAUTHORIZED USE OF THIS DRAWING IS PROHIBITED.



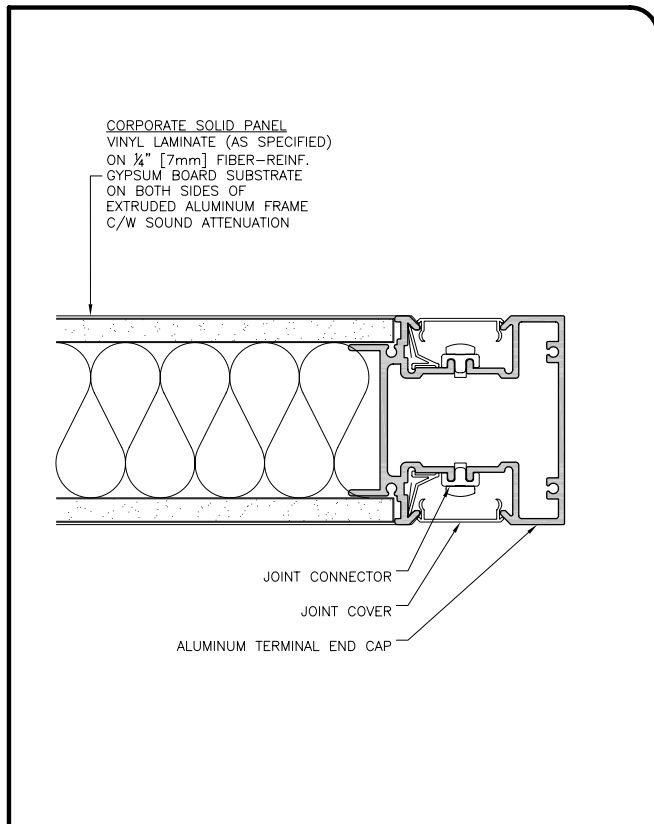
	WALL START AT DOOR ALUMINIUM END CAP (STANDARD)	DWG: 4.1.5

© PSL PARTITION SYSTEMS LTD. UNAUTHORIZED USE OF THIS DRAWING IS PROHIBITED.



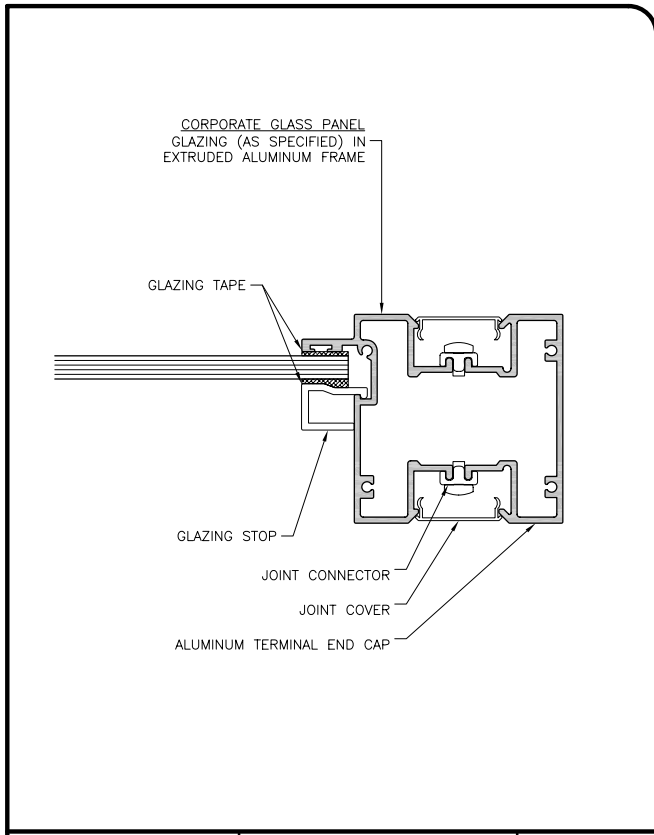
	WALL START LAMINATED END CAP (OPTIONAL)	DWG: 4.1.6

© PSL PARTITION SYSTEMS LTD. UNAUTHORIZED USE OF THIS DRAWING IS PROHIBITED.

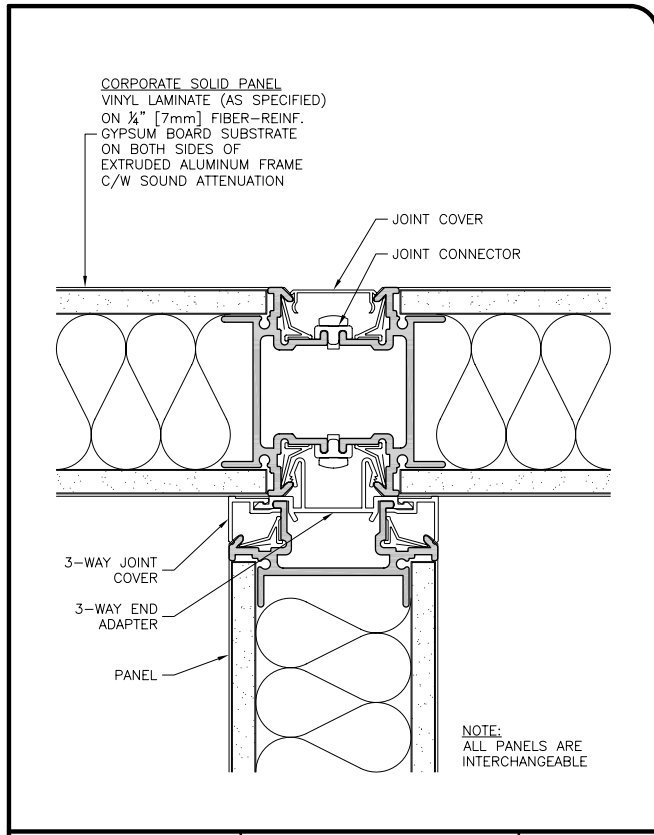


	ALUMINIUM END CAP SOLID PANEL TERMINATION	DWG: 4.2.1

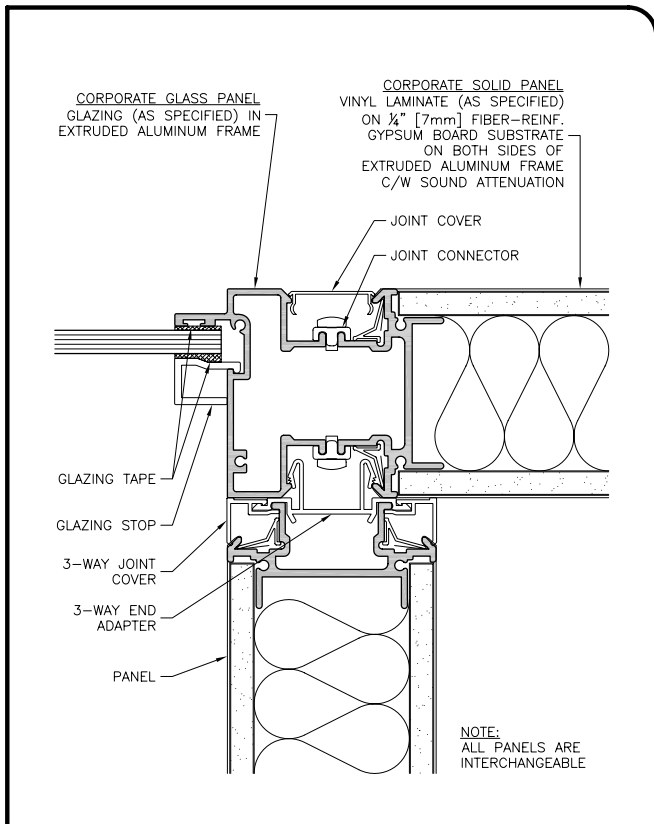
© PSL PARTITION SYSTEMS LTD. UNAUTHORIZED USE OF THIS DRAWING IS PROHIBITED.



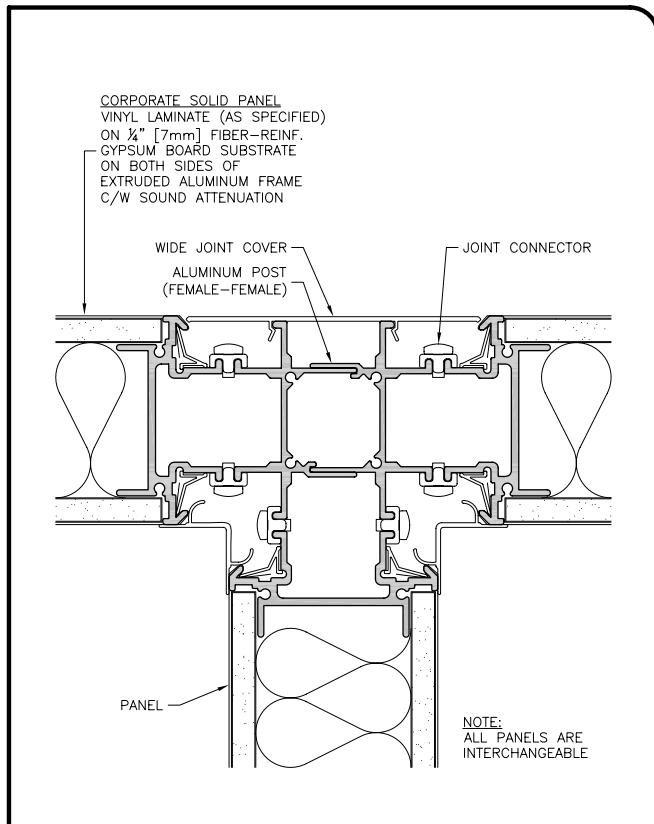
	ALUMINUM END CAP GLASS PANEL TERMINATION	DWG:	4.2.2
		FILE: 4-2.DWG	
<small>© PSL PARTITION SYSTEMS LTD. UNAUTHORIZED USE OF THIS DRAWING IS PROHIBITED.</small>			



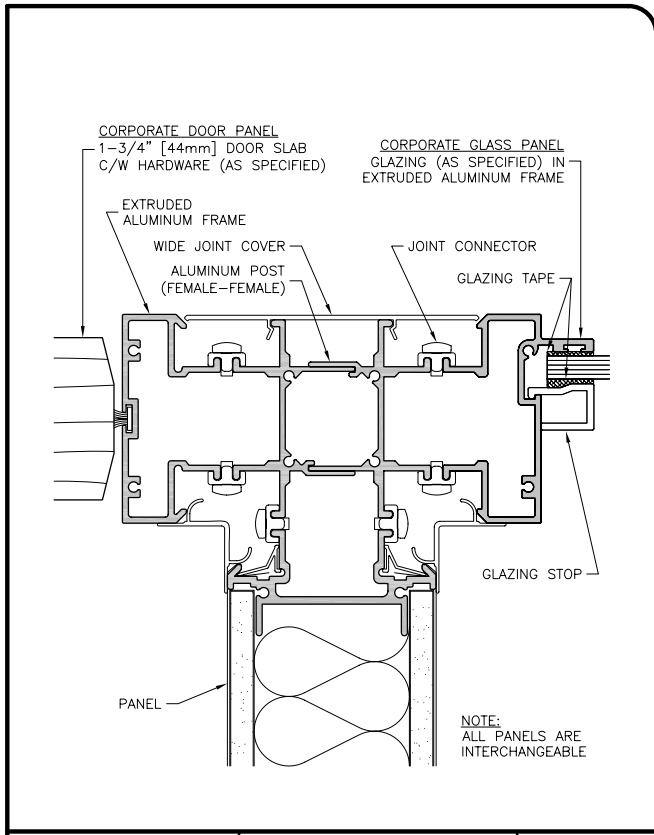
	3-WAY CONNECTION SOLID-SOLID/SOLID	DWG:	5.1.1
		FILE: 5-1.DWG	
<small>© PSL PARTITION SYSTEMS LTD. UNAUTHORIZED USE OF THIS DRAWING IS PROHIBITED.</small>			



	3-WAY CONNECTION SOLID-GLASS/SOLID	DWG:	5.1.2
		FILE: 5-1.DWG	
<small>© PSL PARTITION SYSTEMS LTD. UNAUTHORIZED USE OF THIS DRAWING IS PROHIBITED.</small>			

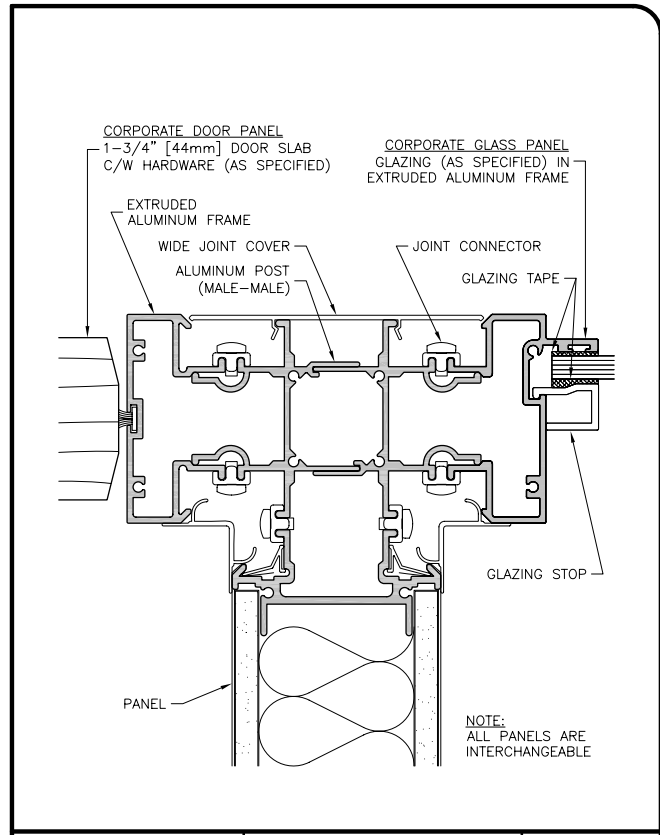


	3-WAY POST SOLID/SOLID/SOLID (STANDARD)	DWG:	5.2.1
		FILE: 5-2.DWG	
<small>© PSL PARTITION SYSTEMS LTD. UNAUTHORIZED USE OF THIS DRAWING IS PROHIBITED.</small>			



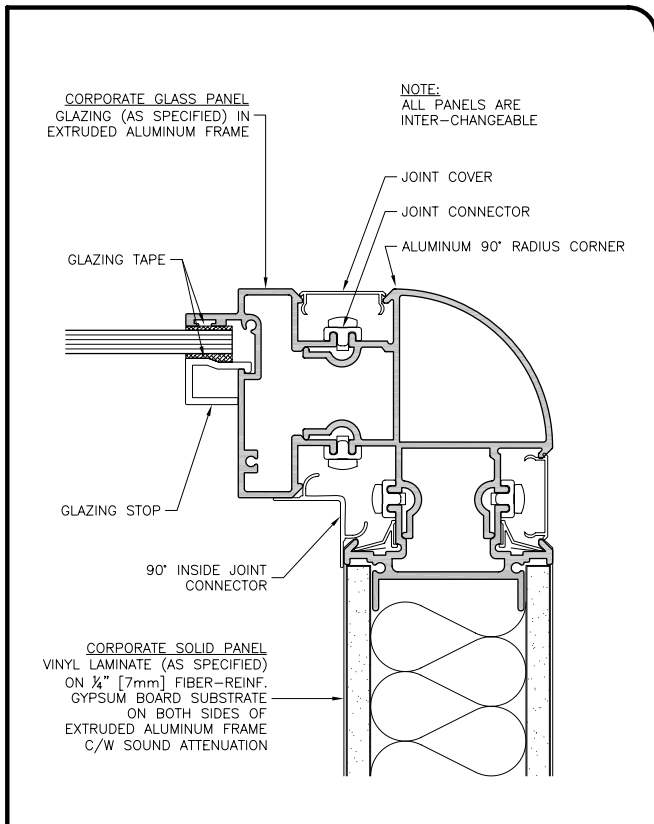
	3-WAY POST DOOR/GLASS/SOLID (STANDARD)		DWG:
	5.2.2		
FILE: 5-2.DWG	SCALE: 1 : 1	DATE: DEC 2006	

© PSL PARTITION SYSTEMS LTD. UNAUTHORIZED USE OF THIS DRAWING IS PROHIBITED.



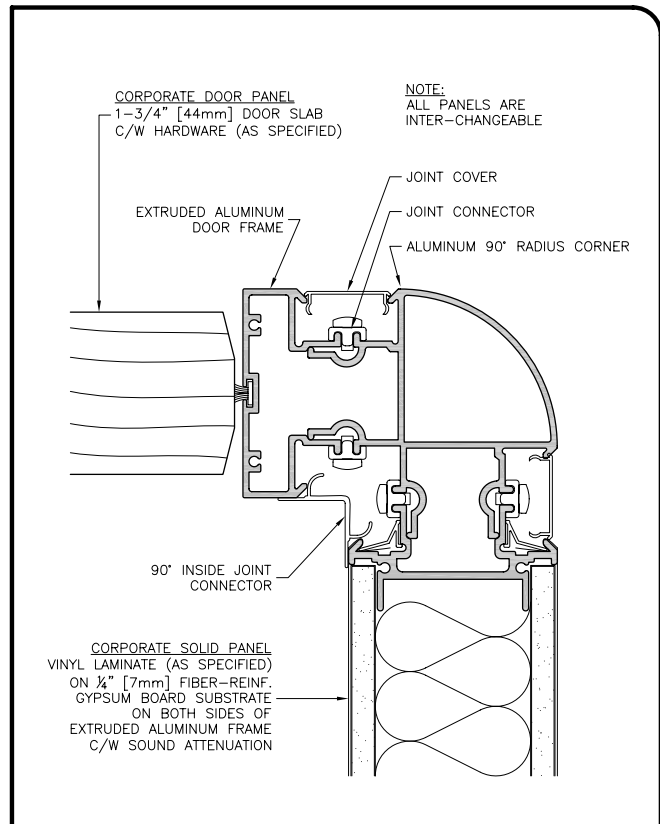
	3-WAY POST DOOR/GLASS/SOLID (OPTIONAL)		DWG:
	5.2.3		
FILE: 5-2.DWG	SCALE: 1 : 1	DATE: DEC 2006	

© PSL PARTITION SYSTEMS LTD. UNAUTHORIZED USE OF THIS DRAWING IS PROHIBITED.



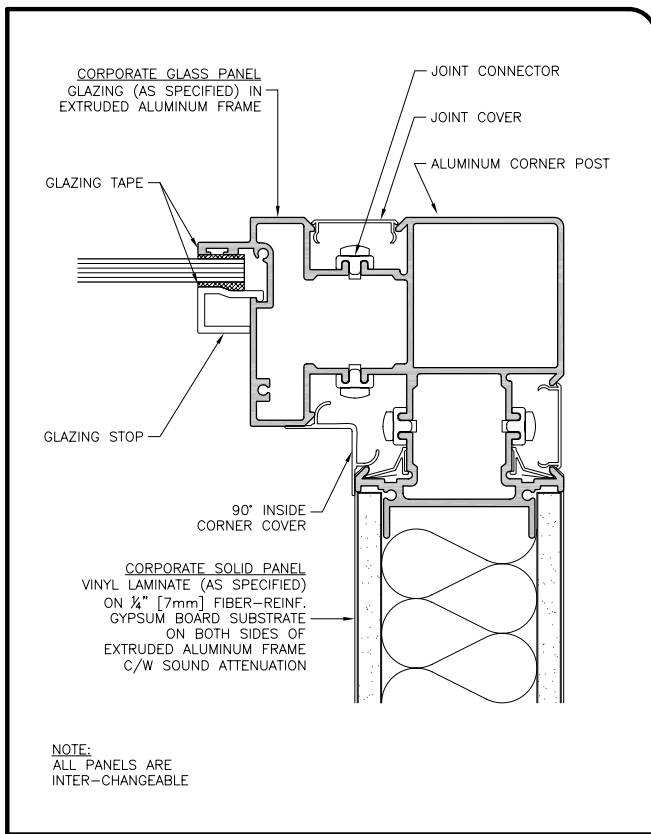
	90° RADIUS CORNER SOLID PANEL GLASS PANEL		DWG:
	5.3.1		
FILE: 5-3.DWG	SCALE: 1 : 1	DATE: JAN 2003	

© PSL PARTITION SYSTEMS LTD. UNAUTHORIZED USE OF THIS DRAWING IS PROHIBITED.



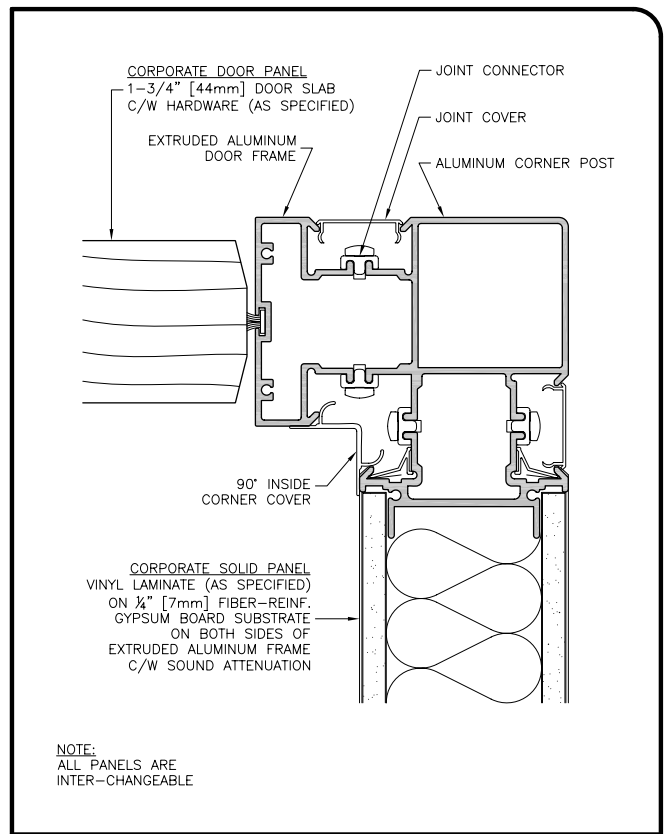
	90° RADIUS CORNER SOLID PANEL DOOR PANEL		DWG:
	5.3.2		
FILE: 5-3.DWG	SCALE: 1 : 1	DATE: JAN 2003	

© PSL PARTITION SYSTEMS LTD. UNAUTHORIZED USE OF THIS DRAWING IS PROHIBITED.



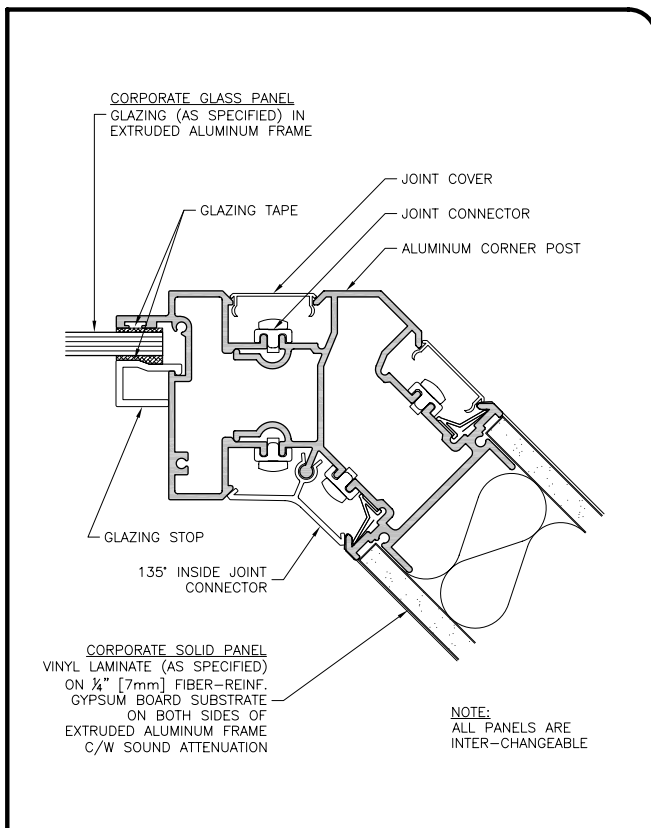
	90° CORNER POST SOLID PANEL GLASS PANEL	DWG:	5.4.1
		FILE: 5-4.DWG	

© PSL PARTITION SYSTEMS LTD. UNAUTHORIZED USE OF THIS DRAWING IS PROHIBITED.



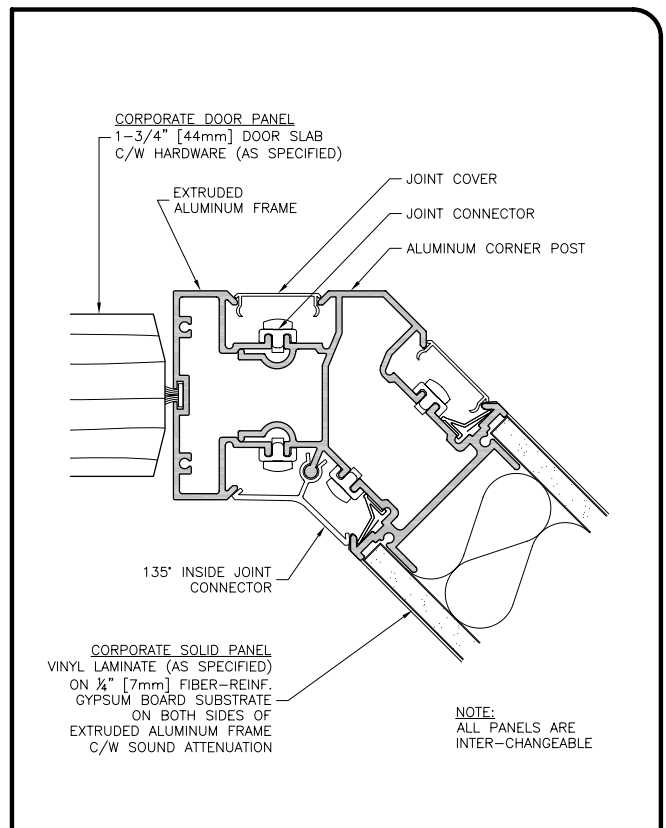
	90° CORNER POST SOLID PANEL DOOR PANEL	DWG:	5.4.2
		FILE: 5-4.DWG	

© PSL PARTITION SYSTEMS LTD. UNAUTHORIZED USE OF THIS DRAWING IS PROHIBITED.



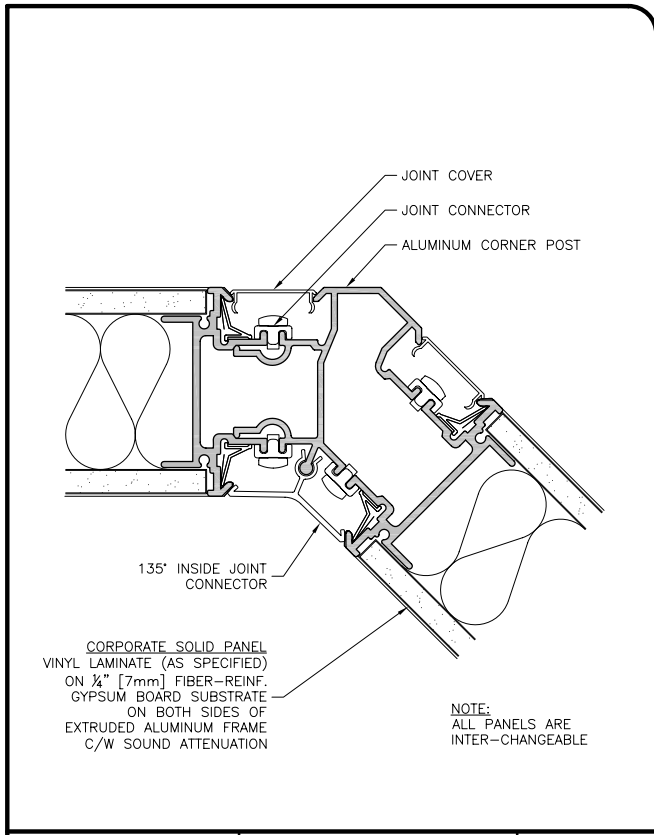
	135° CORNER POST SOLID-GLASS (TYPICAL)	DWG:	5.5.1
		FILE: 5-5.DWG	

© PSL PARTITION SYSTEMS LTD. UNAUTHORIZED USE OF THIS DRAWING IS PROHIBITED.

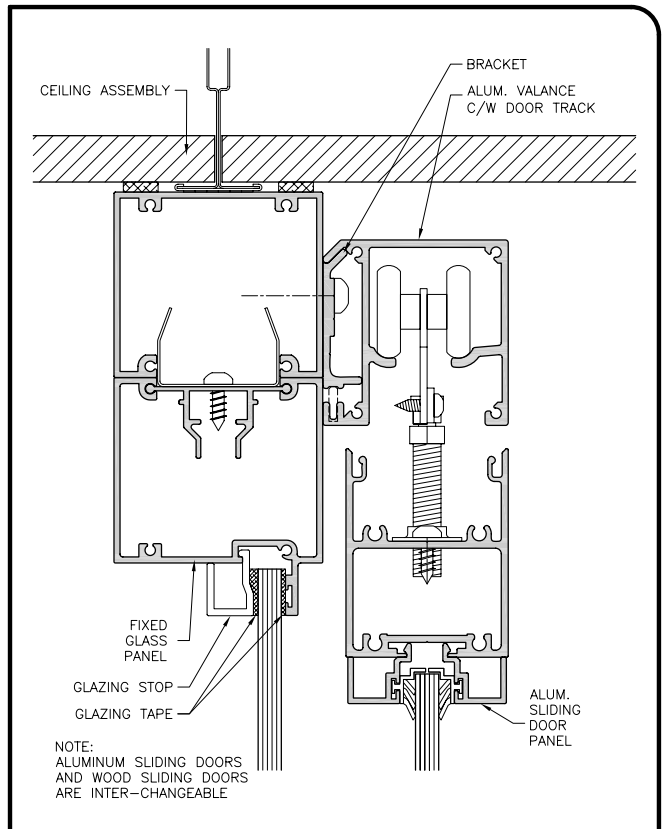


	135° CORNER POST SOLID-DOOR (TYPICAL)	DWG:	5.5.2
		FILE: 5-5.DWG	

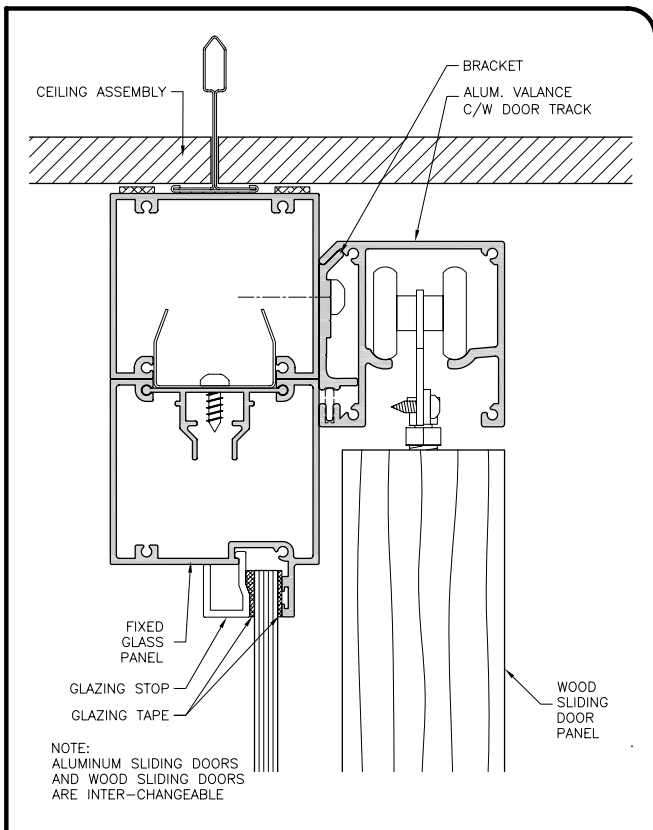
© PSL PARTITION SYSTEMS LTD. UNAUTHORIZED USE OF THIS DRAWING IS PROHIBITED.



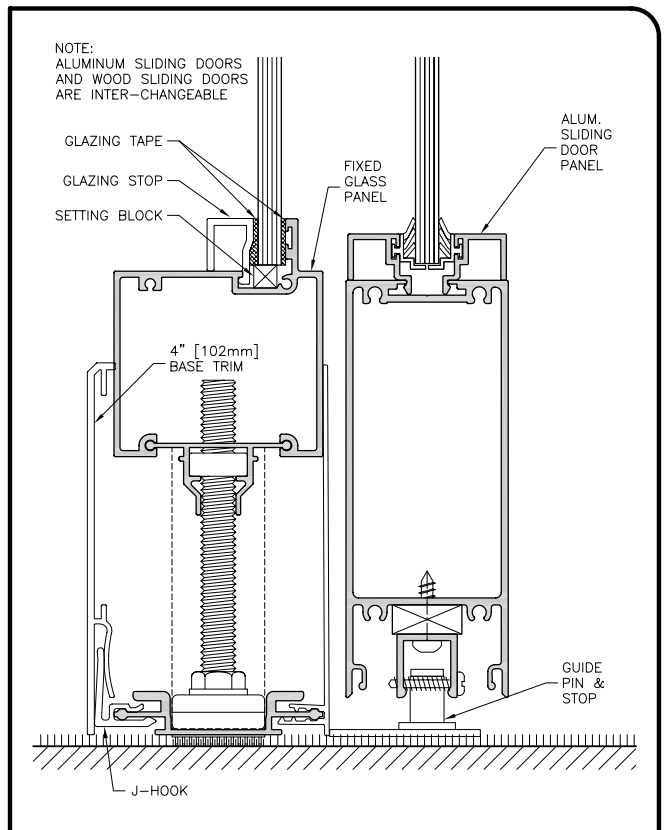
	135° CORNER POST SOLID-SOLID (TYPICAL)	DWG:
		5.5.3
FILE: 5-5.DWG	SCALE: 1 : 1	DATE: JAN 2004
<small>© PSL PARTITION SYSTEMS LTD. UNAUTHORIZED USE OF THIS DRAWING IS PROHIBITED.</small>		



	GLASS SLIDING DOOR AT CEILING	DWG:
		6.1.1
FILE: 6-1.DWG	SCALE: 1 : 1	DATE: MAR 2009
<small>© PSL PARTITION SYSTEMS LTD. UNAUTHORIZED USE OF THIS DRAWING IS PROHIBITED.</small>		

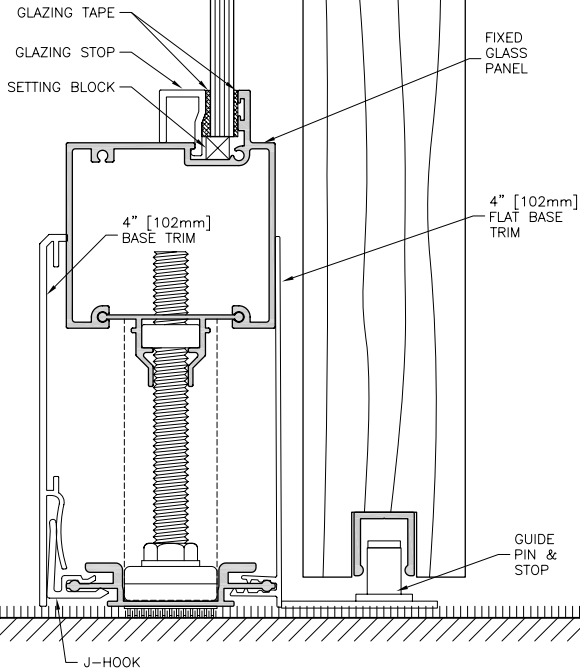


	WOOD SLIDING DOOR AT CEILING	DWG:
		6.1.2
FILE: 6-1.DWG	SCALE: 1 : 1	DATE: MAR 2009
<small>© PSL PARTITION SYSTEMS LTD. UNAUTHORIZED USE OF THIS DRAWING IS PROHIBITED.</small>		

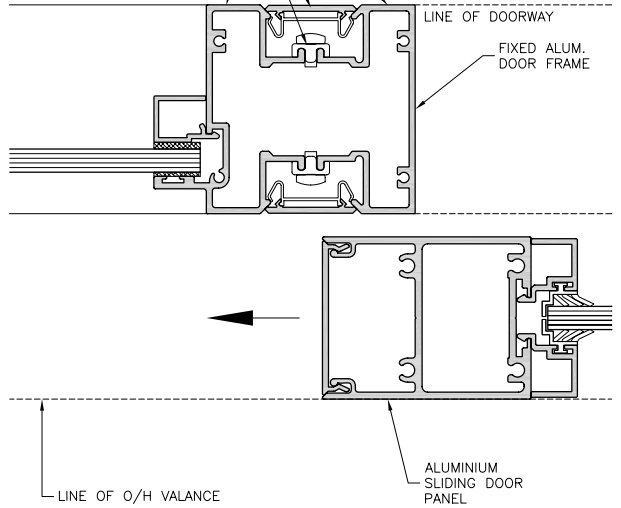
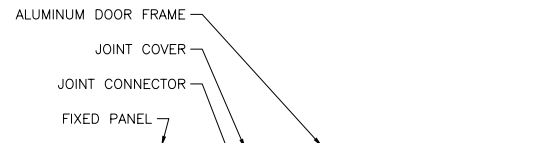


	GLASS SLIDING DOOR AT FLOOR	DWG:
		6.1.3
FILE: 6-1.DWG	SCALE: 1 : 1	DATE: MAR 2009
<small>© PSL PARTITION SYSTEMS LTD. UNAUTHORIZED USE OF THIS DRAWING IS PROHIBITED.</small>		

NOTE:
ALUMINUM SLIDING DOORS
AND WOOD SLIDING DOORS
ARE INTER-CHANGEABLE



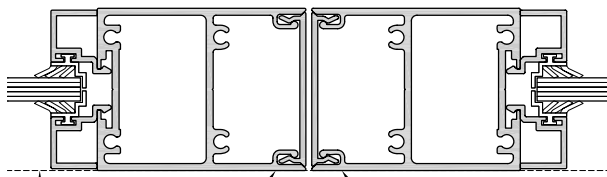
	WOOD SLIDING DOOR AT FLOOR	DWG:
		6.1.4
FILE: 6-1.DWG	SCALE: 1 : 1	DATE: MAR 2009
© PSL PARTITION SYSTEMS LTD. UNAUTHORIZED USE OF THIS DRAWING IS PROHIBITED.		



NOTE:
ALUMINUM SLIDING DOORS
AND WOOD SLIDING DOORS
ARE INTER-CHANGEABLE

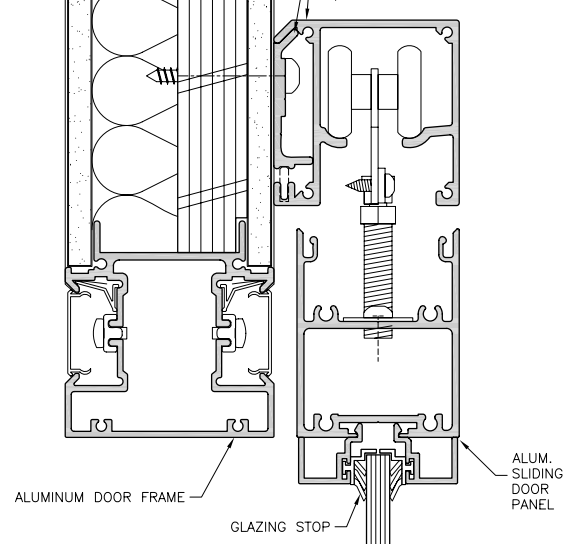
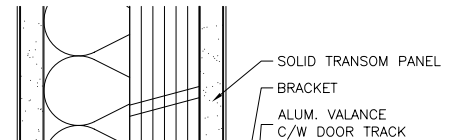
	GLASS SLIDING DOOR OUTSIDE JAMB	DWG:
		6.1.5
FILE: 6-1.DWG	SCALE: 1 : 1	DATE: MAR 2009
© PSL PARTITION SYSTEMS LTD. UNAUTHORIZED USE OF THIS DRAWING IS PROHIBITED.		

LINE OF DOORWAY



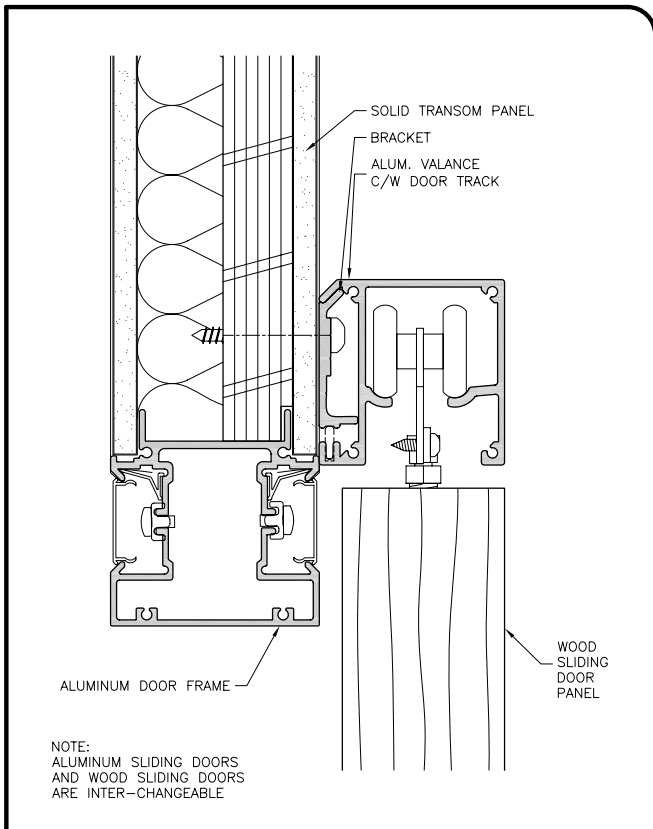
NOTE:
ALUMINUM SLIDING DOORS
AND WOOD SLIDING DOORS
ARE INTER-CHANGEABLE

	DOUBLE GLASS SLIDING DOOR	DWG:
		6.1.6
FILE: 6-1.DWG	SCALE: 1 : 1	DATE: MAR 2009
© PSL PARTITION SYSTEMS LTD. UNAUTHORIZED USE OF THIS DRAWING IS PROHIBITED.		

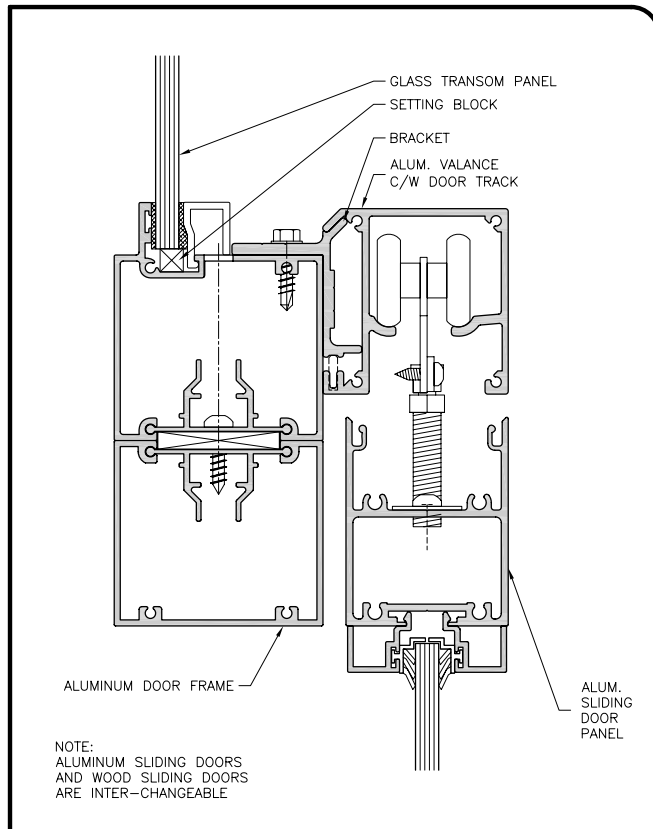


NOTE:
ALUMINUM SLIDING DOORS
AND WOOD SLIDING DOORS
ARE INTER-CHANGEABLE

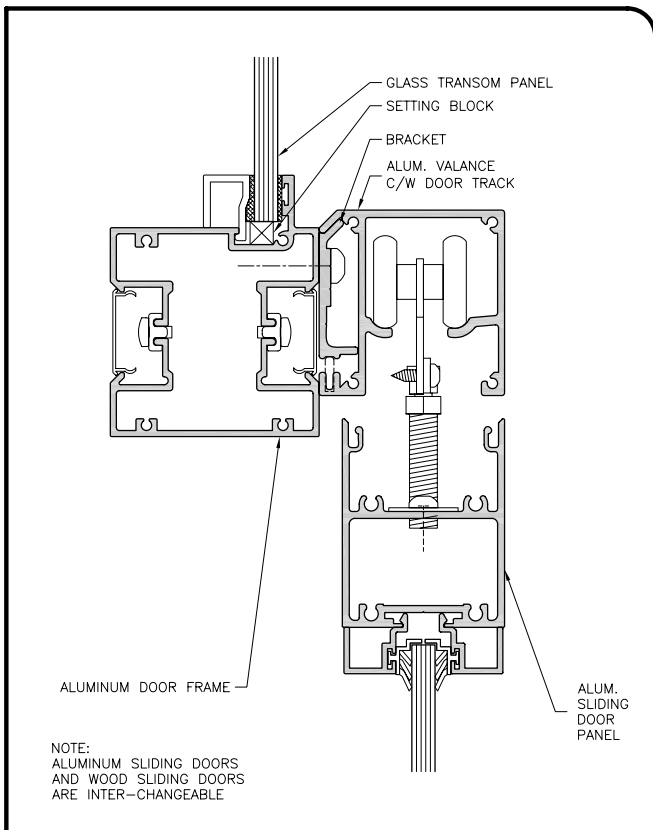
	PARTIAL HEIGHT GLASS SLIDING DOOR SOLID TRANSOM	DWG:
		6.1.7
FILE: 6-1.DWG	SCALE: 1 : 1	DATE: MAR 2009
© PSL PARTITION SYSTEMS LTD. UNAUTHORIZED USE OF THIS DRAWING IS PROHIBITED.		



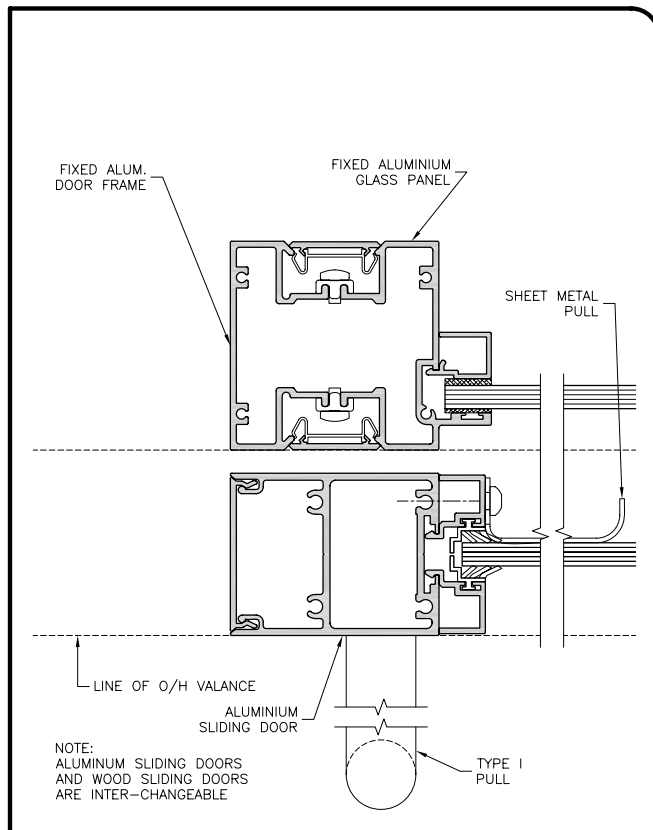
	PARTIAL HEIGHT WOOD SLIDING DOOR	DWG: 6.1.8
© PSL PARTITION SYSTEMS LTD. UNAUTHORIZED USE OF THIS DRAWING IS PROHIBITED.		



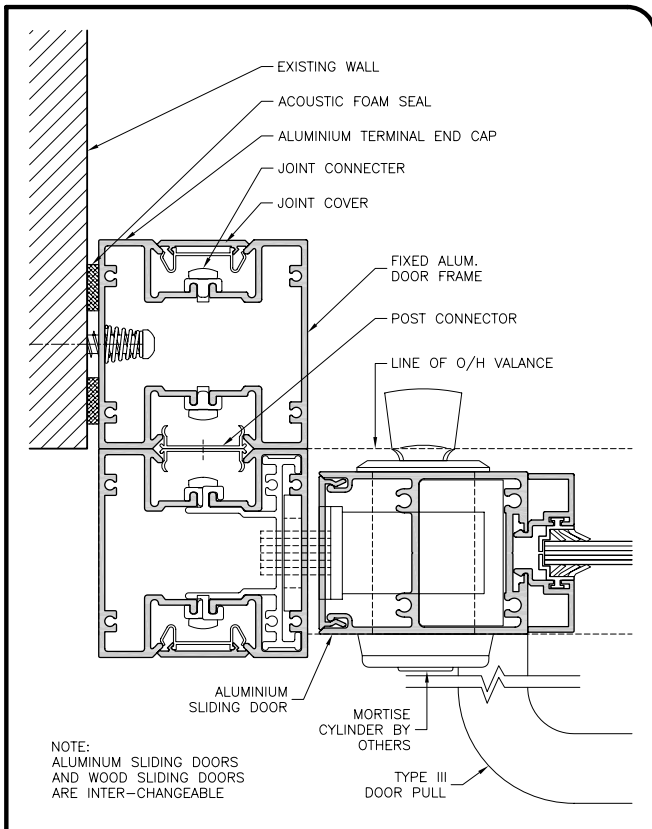
	PARTIAL HEIGHT GLASS SLIDING DOOR GLASS TRANSM	DWG: 6.1.9
© PSL PARTITION SYSTEMS LTD. UNAUTHORIZED USE OF THIS DRAWING IS PROHIBITED.		



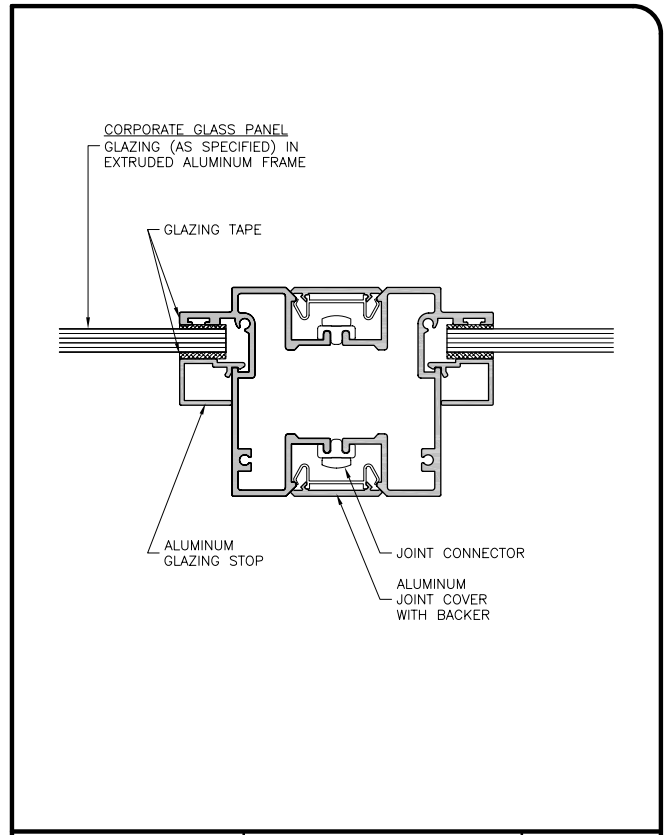
	PARTIAL HEIGHT GLASS SLIDING DOOR GLASS TRANSM	DWG: 6.1.10
© PSL PARTITION SYSTEMS LTD. UNAUTHORIZED USE OF THIS DRAWING IS PROHIBITED.		



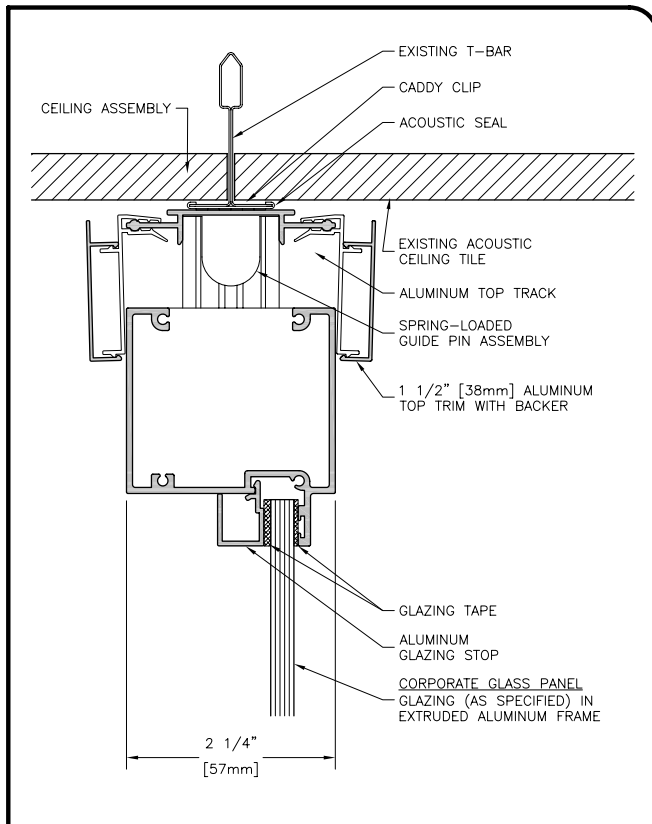
	GLASS SLIDING DOOR HANDLE DETAIL	DWG: 6.1.11
© PSL PARTITION SYSTEMS LTD. UNAUTHORIZED USE OF THIS DRAWING IS PROHIBITED.		



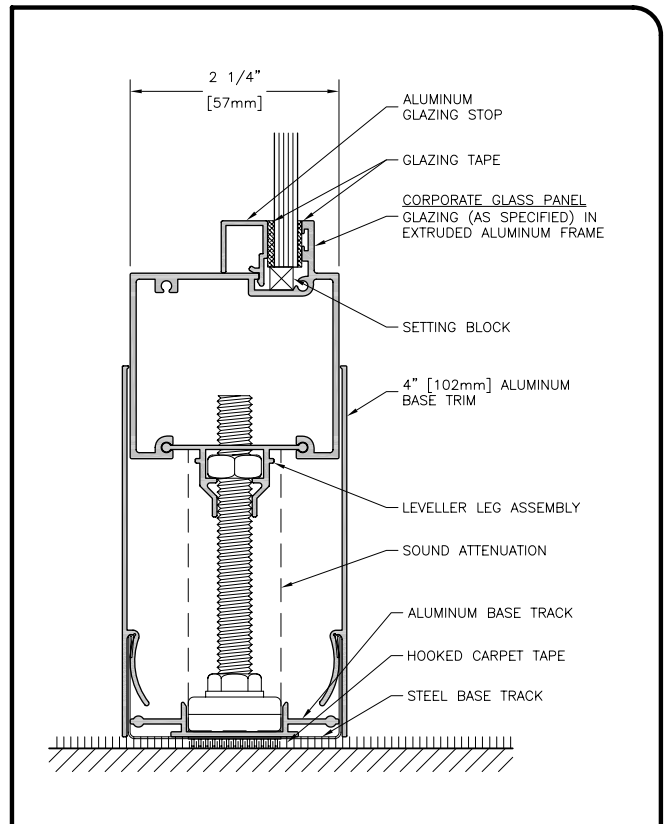
	GLASS SLIDING DOOR HOOKBOLT LOCK DETAIL	DWG:	6.1.12
		FILE: 6-1.DWG SCALE: 1 : 1 DATE: MAR 2009	
<small>© PSL PARTITION SYSTEMS LTD. UNAUTHORIZED USE OF THIS DRAWING IS PROHIBITED.</small>			



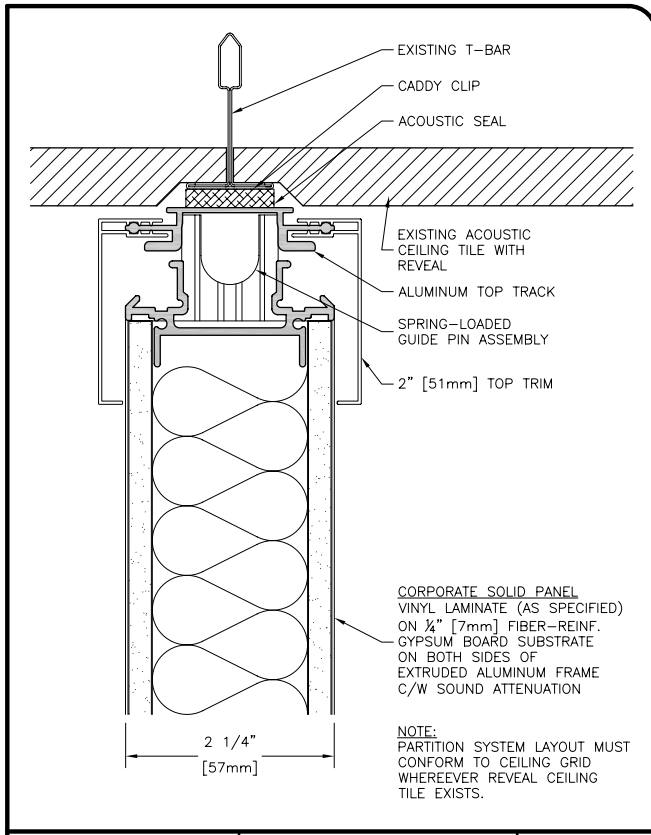
	GLASS PANEL GLASS PANEL ALL-ALUMINIUM	DWG:	6.2.1
		FILE: 6-2.DWG SCALE: 1 : 1 DATE: JAN 2003	
<small>© PSL PARTITION SYSTEMS LTD. UNAUTHORIZED USE OF THIS DRAWING IS PROHIBITED.</small>			



	GLASS PANEL AT CEILING ALL-ALUMINIUM	DWG:	6.2.2
		FILE: 6-2.DWG SCALE: 1 : 1 DATE: NOV 2006	
<small>© PSL PARTITION SYSTEMS LTD. UNAUTHORIZED USE OF THIS DRAWING IS PROHIBITED.</small>			

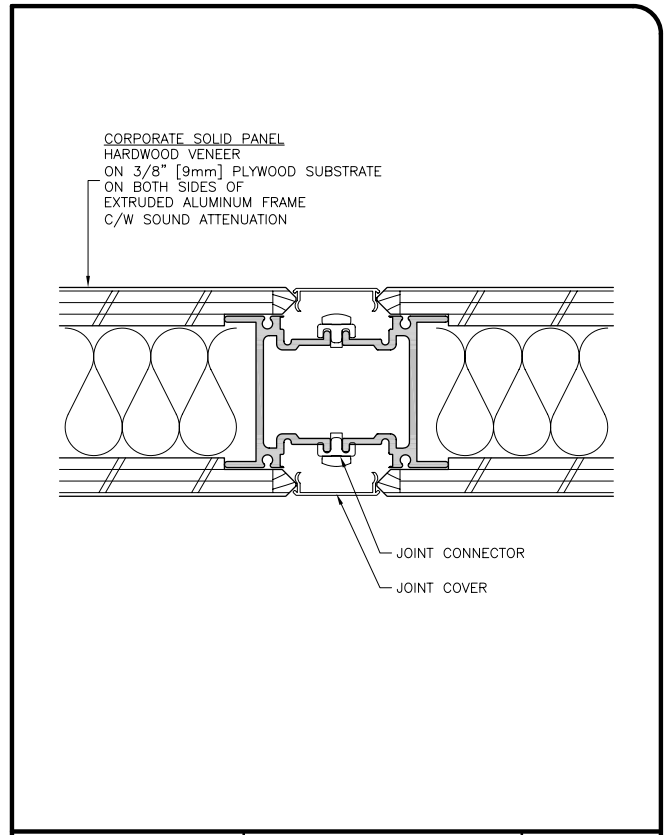


	GLASS PANEL AT FLOOR ALL-ALUMINIUM	DWG:	6.2.3
		FILE: 6-2.DWG SCALE: 1 : 1 DATE: JAN 2003	
<small>© PSL PARTITION SYSTEMS LTD. UNAUTHORIZED USE OF THIS DRAWING IS PROHIBITED.</small>			



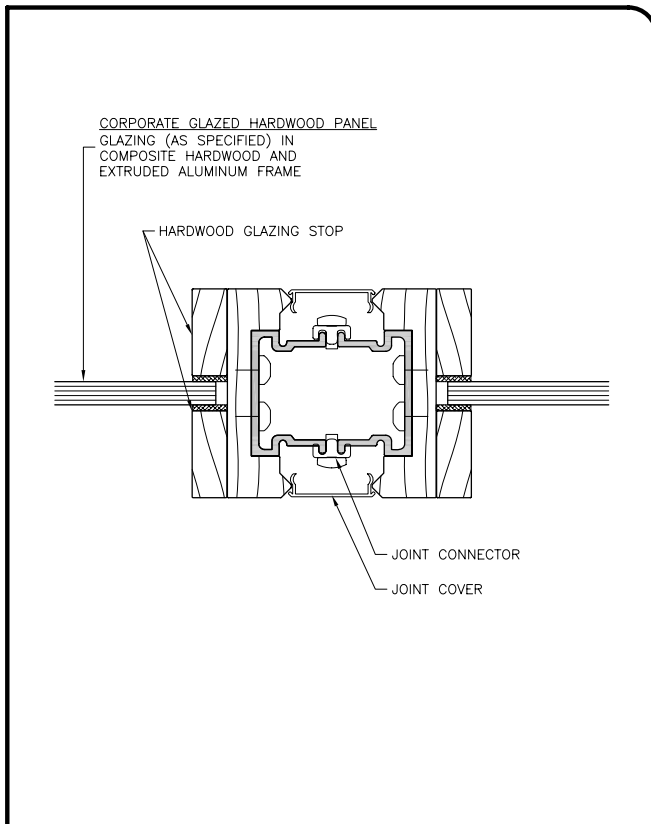
	SOLID PANEL AT CEILING REVEAL		DWG: 6.3.1
	FILE: 6-3.DWG	SCALE: 1 : 1	DATE: NOV 2006

© PSL PARTITION SYSTEMS LTD. UNAUTHORIZED USE OF THIS DRAWING IS PROHIBITED.



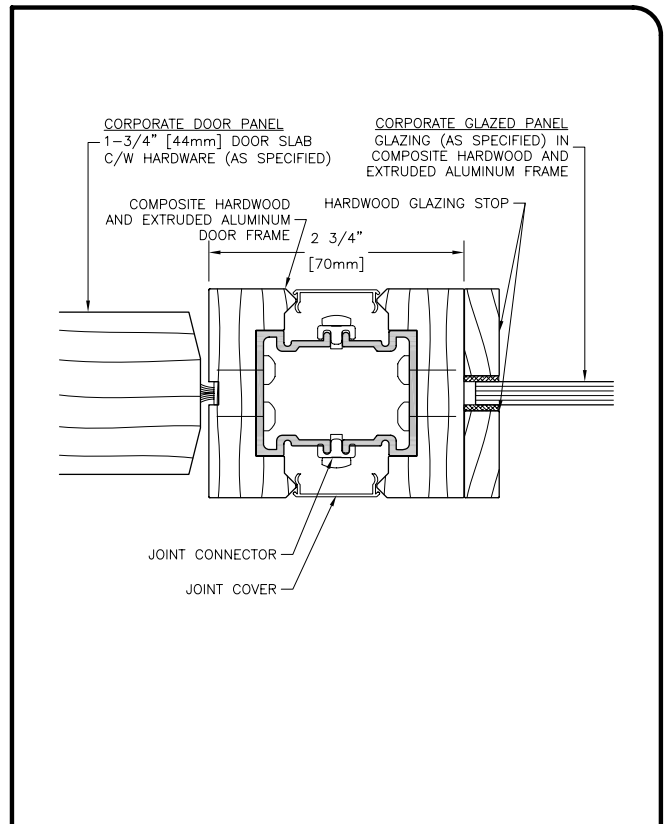
	SOLID PANEL SOLID PANEL		DWG: 6.4.1
	FILE: 6-4.DWG	SCALE: 1 : 1	DATE: JAN 2003

© PSL PARTITION SYSTEMS LTD. UNAUTHORIZED USE OF THIS DRAWING IS PROHIBITED.



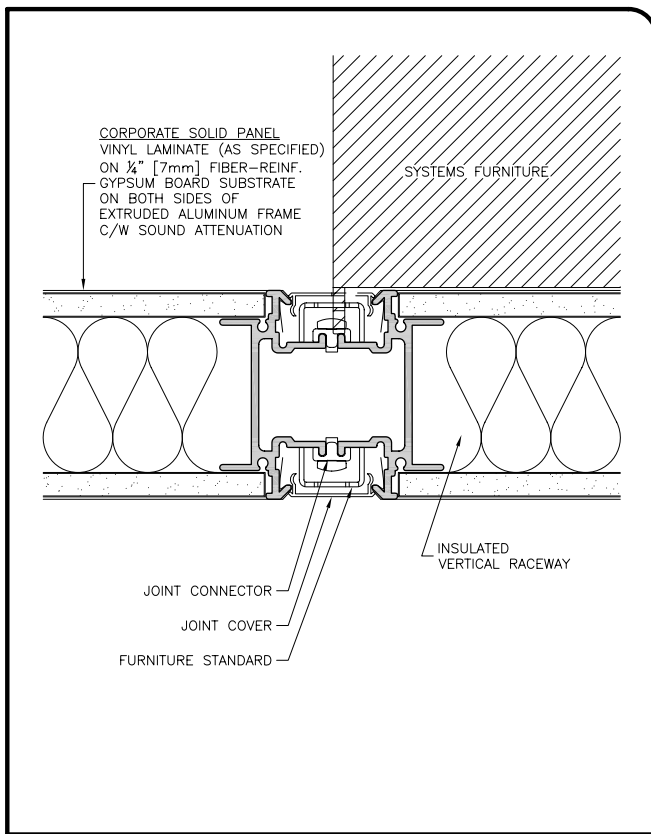
	HARDWOOD GLASS PANEL HARDWOOD GLASS PANEL		DWG: 6.4.2
	FILE: 6-4.DWG	SCALE: 1 : 1	DATE: JAN 2003

© PSL PARTITION SYSTEMS LTD. UNAUTHORIZED USE OF THIS DRAWING IS PROHIBITED.



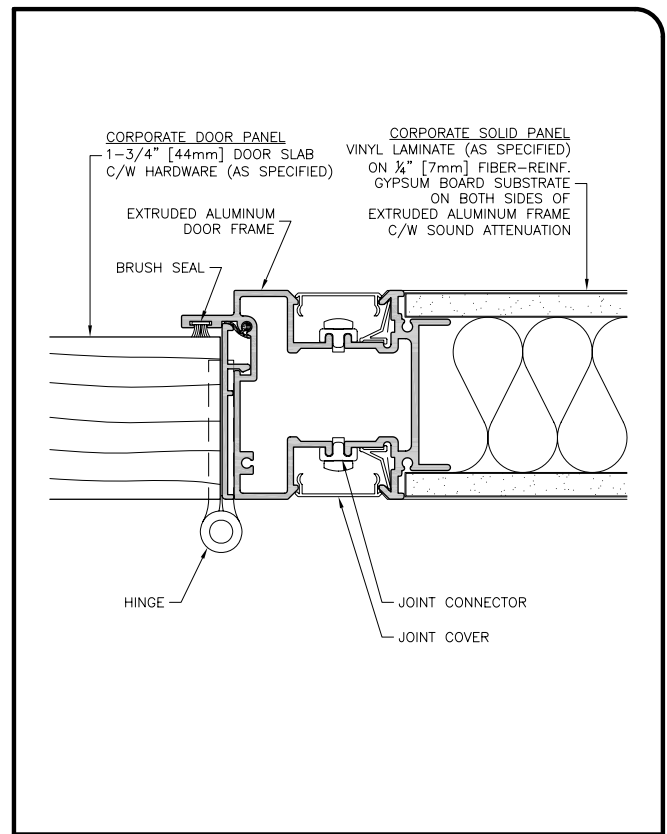
	HARDWOOD DOOR PANEL HARDWOOD GLASS PANEL (PIVOT SIDE)		DWG: 6.4.3
	FILE: 6-4.DWG	SCALE: 1 : 1	DATE: JAN 2003

© PSL PARTITION SYSTEMS LTD. UNAUTHORIZED USE OF THIS DRAWING IS PROHIBITED.



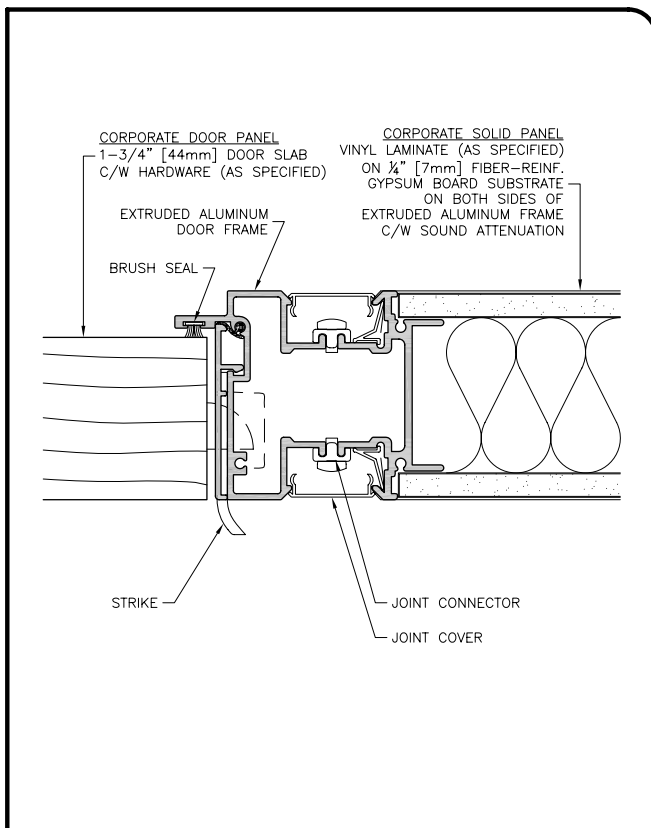
	PARTITION SYSTEMS	FURNITURE STANDARD AT PANEL JOINT	DWG:
			6.5.1
FILE: 6-5.dwg	SCALE: 1 : 1	DATE: FEB 2004	

© PSL PARTITION SYSTEMS LTD. UNAUTHORIZED USE OF THIS DRAWING IS PROHIBITED.



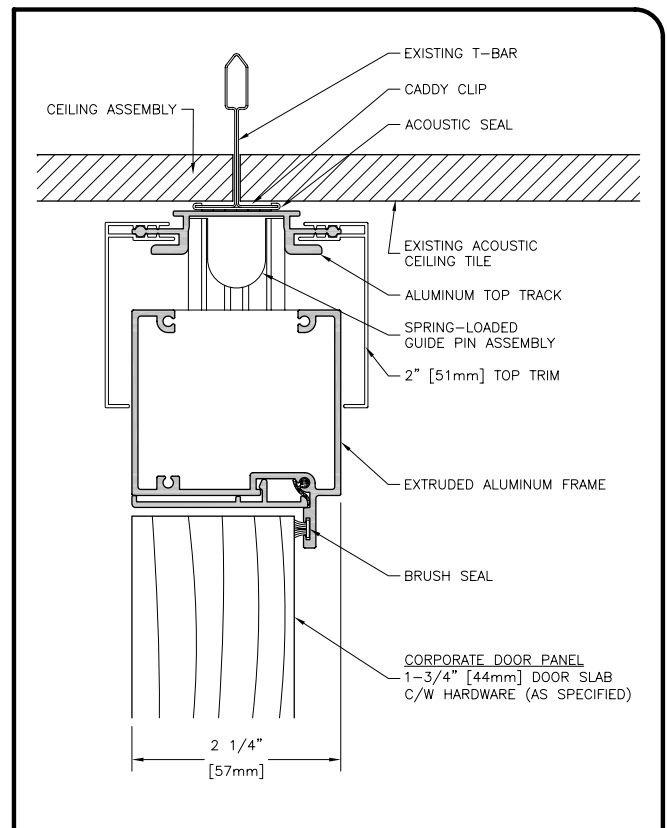
	PARTITION SYSTEMS	DOOR PANEL SOLID PANEL HINGE SIDE (OPTION)	DWG:
			6.6.1
FILE: 1-1.DWG	SCALE: 1 : 1	DATE: MAR 2004	

© PSL PARTITION SYSTEMS LTD. UNAUTHORIZED USE OF THIS DRAWING IS PROHIBITED.



	PARTITION SYSTEMS	DOOR PANEL SOLID PANEL STRIKE SIDE (OPTION)	DWG:
			6.6.2
FILE: 1-1.DWG	SCALE: 1 : 1	DATE: MAR 2004	

© PSL PARTITION SYSTEMS LTD. UNAUTHORIZED USE OF THIS DRAWING IS PROHIBITED.



	PARTITION SYSTEMS	HINGED DOOR PANEL AT CEILING (OPTION)	DWG:
			6.6.3
FILE: 2-1.DWG	SCALE: 1 : 1	DATE: NOV 2006	

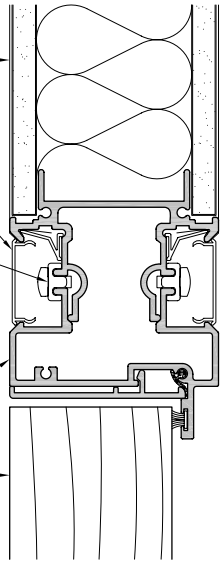
© PSL PARTITION SYSTEMS LTD. UNAUTHORIZED USE OF THIS DRAWING IS PROHIBITED.

CORPORATE SOLID PANEL
VINYL LAMINATE (AS SPECIFIED)
ON 1/4" [7mm] FIBER-REINF.
GYPSUM BOARD SUBSTRATE
ON BOTH SIDES OF
EXTRUDED ALUMINUM FRAME
C/W SOUND ATTENUATION

JOINT COVER
JOINT CONNECTOR

EXTRUDED ALUMINUM FRAME

CORPORATE DOOR PANEL
1-3/4" [44mm] DOOR SLAB
C/W HARDWARE (AS SPECIFIED)



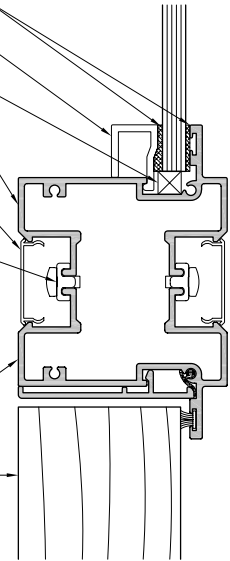
GLAZING TAPE
GLAZING STOP
SETTING BLOCK

CORPORATE GLASS PANEL
GLAZING (AS SPECIFIED) IN
EXTRUDED ALUMINUM FRAME

JOINT COVER
JOINT CONNECTOR

EXTRUDED ALUMINUM FRAME

CORPORATE DOOR PANEL
1-3/4" [44mm] DOOR SLAB
C/W HARDWARE (AS SPECIFIED)



STACKED PANEL
SOLID ABOVE
HINGED DOOR

DWG:

6.6.4

FILE: 6-6.DWG

SCALE: 1 : 1

DATE: JUN 2004

© PSL PARTITION SYSTEMS LTD.

UNAUTHORIZED USE OF THIS DRAWING IS PROHIBITED.



STACKED PANEL
GLASS ABOVE
HINGED DOOR

DWG:

6.6.5

FILE: 6-6.DWG

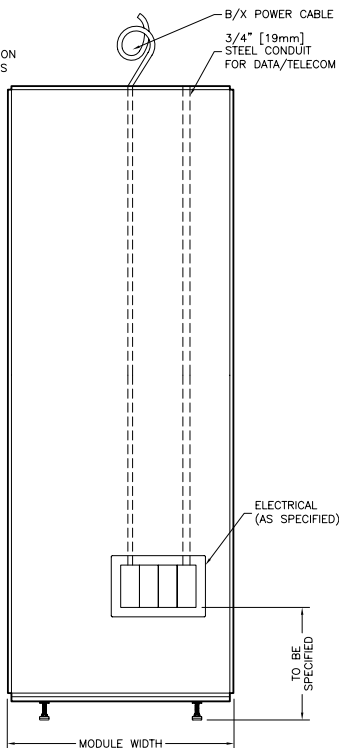
SCALE: 1 : 1

DATE: JUN 2004

© PSL PARTITION SYSTEMS LTD.

UNAUTHORIZED USE OF THIS DRAWING IS PROHIBITED.

NOTE:
TYPICAL CONFIGURATION
(OTHER COMBINATIONS
ARE AVAILABLE)



ELECTRICAL PANEL
SINGLE SIDED

DWG:

7.1.1

FILE: 7-1.DWG

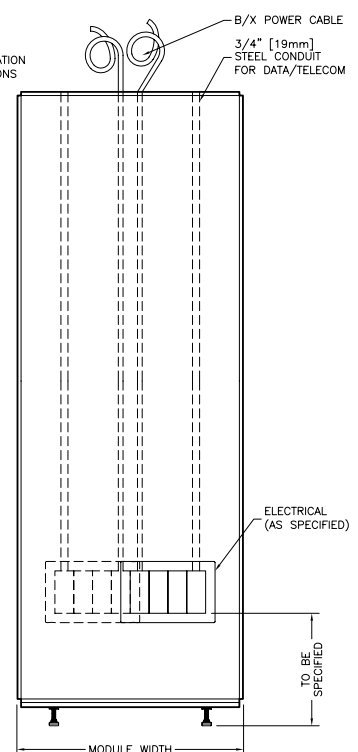
SCALE: NTS

DATE: JAN 2003

© PSL PARTITION SYSTEMS LTD.

UNAUTHORIZED USE OF THIS DRAWING IS PROHIBITED.

NOTE:
TYPICAL CONFIGURATION
(OTHER COMBINATIONS
ARE AVAILABLE)



ELECTRICAL PANEL
DOUBLE SIDED

DWG:

7.1.2

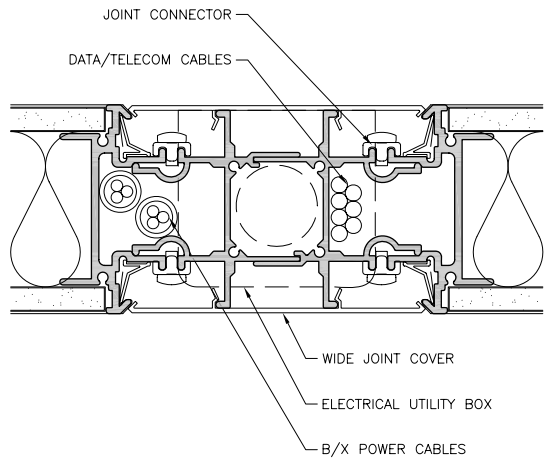
FILE: 7-1.DWG

SCALE: NTS

DATE: JAN 2003

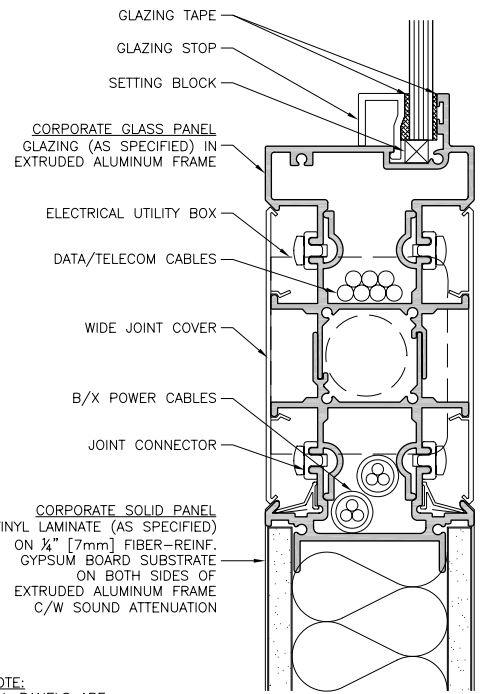
© PSL PARTITION SYSTEMS LTD.

UNAUTHORIZED USE OF THIS DRAWING IS PROHIBITED.



NOTE:
ALL PANELS ARE
INTERCHANGEABLE

OPTION



NOTE:
ALL PANELS ARE
INTERCHANGEABLE

	ELECTRICAL CHASE VERTICAL POST	DWG: 7.2.1

© PSL PARTITION SYSTEMS LTD.

UNAUTHORIZED USE OF THIS DRAWING IS PROHIBITED.

	ELECTRICAL CHASE HORIZONTAL POST	DWG: 7.3.1

© PSL PARTITION SYSTEMS LTD.

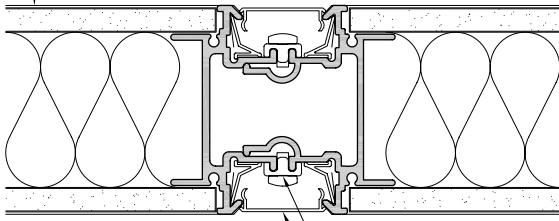
UNAUTHORIZED USE OF THIS DRAWING IS PROHIBITED.

CORPORATE SERIES

STACKED
&
PARTIAL HEIGHT
DETAILS



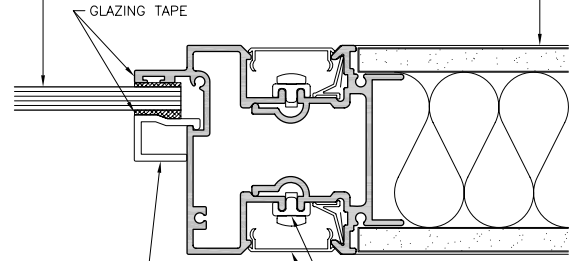
CORPORATE SOLID PANEL
VINYL LAMINATE (AS SPECIFIED)
ON 1/4" [7mm] FIBER-REINF.
GYPSUM BOARD SUBSTRATE
ON BOTH SIDES OF
EXTRUDED ALUMINUM FRAME
C/W SOUND ATTENUATION



JOINT CONNECTOR
JOINT COVER

CORPORATE GLASS PANEL
GLAZING (AS SPECIFIED) IN
EXTRUDED ALUMINUM FRAME

CORPORATE SOLID PANEL
VINYL LAMINATE (AS SPECIFIED)
ON 1/4" [7mm] FIBER-REINF.
GYPSUM BOARD SUBSTRATE
ON BOTH SIDES OF
EXTRUDED ALUMINUM FRAME
C/W SOUND ATTENUATION



GLAZING TAPE
GLAZING STOP
JOINT CONNECTOR
JOINT COVER



SOLID PANEL
SOLID PANEL
(PROGRESSIVE)

DWG:
8.1.1

FILE: 8-1.DWG

SCALE: 1 : 1

DATE: JAN 2003

© PSL PARTITION SYSTEMS LTD.

UNAUTHORIZED USE OF THIS DRAWING IS PROHIBITED.



SOLID PANEL
GLASS PANEL
(PROGRESSIVE)

DWG:
8.1.2

FILE: 8-1.DWG

SCALE: 1 : 1

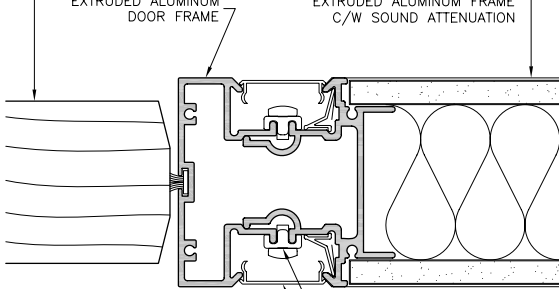
DATE: JAN 2003

© PSL PARTITION SYSTEMS LTD.

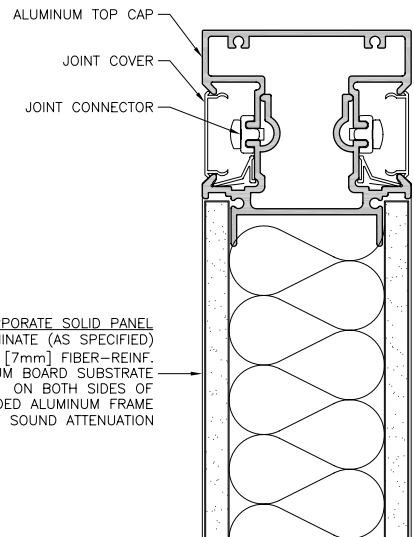
UNAUTHORIZED USE OF THIS DRAWING IS PROHIBITED.

CORPORATE DOOR PANEL
1-3/4" [44mm] DOOR SLAB
C/W HARDWARE (AS SPECIFIED)

CORPORATE SOLID PANEL
VINYL LAMINATE (AS SPECIFIED)
ON 1/4" [7mm] FIBER-REINF.
GYPSUM BOARD SUBSTRATE
ON BOTH SIDES OF
EXTRUDED ALUMINUM FRAME
C/W SOUND ATTENUATION



JOINT CONNECTOR
JOINT COVER



ALUMINUM TOP CAP
JOINT COVER
JOINT CONNECTOR
CORPORATE SOLID PANEL
VINYL LAMINATE (AS SPECIFIED)
ON 1/4" [7mm] FIBER-REINF.
GYPSUM BOARD SUBSTRATE
ON BOTH SIDES OF
EXTRUDED ALUMINUM FRAME
C/W SOUND ATTENUATION



SOLID PANEL
DOOR PANEL
(PROGRESSIVE)

DWG:
8.1.3

FILE: 8-1.DWG

SCALE: 1 : 1

DATE: JAN 2003

© PSL PARTITION SYSTEMS LTD.

UNAUTHORIZED USE OF THIS DRAWING IS PROHIBITED.



ALUMINUM TOP CAP
SOLID PANEL

DWG:
8.2.1

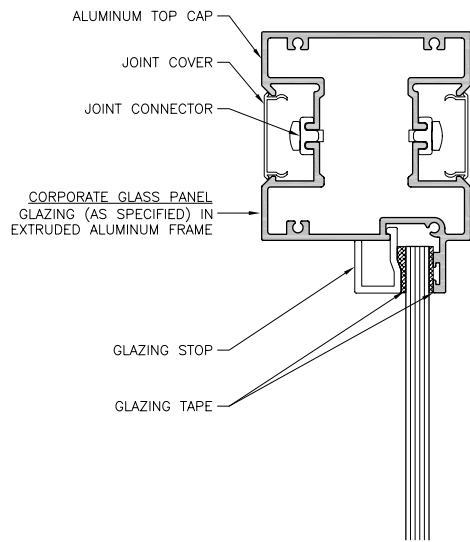
FILE: 8-2.DWG

SCALE: 1 : 1

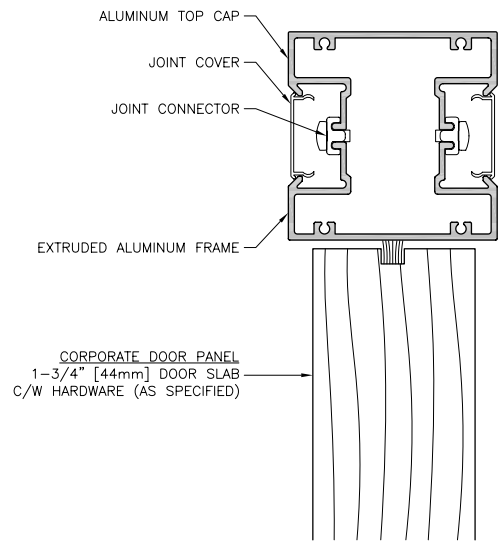
DATE: JAN 2003

© PSL PARTITION SYSTEMS LTD.

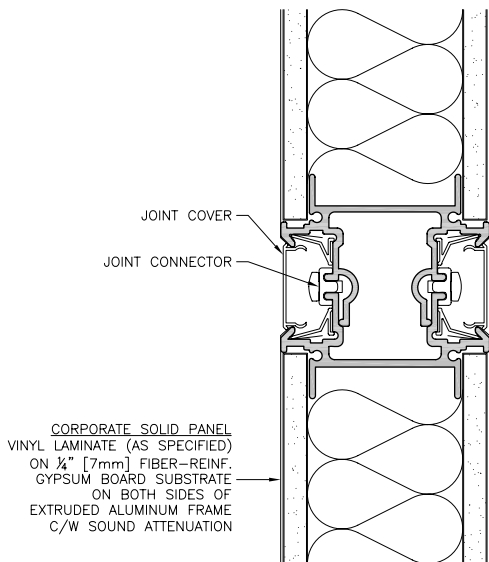
UNAUTHORIZED USE OF THIS DRAWING IS PROHIBITED.



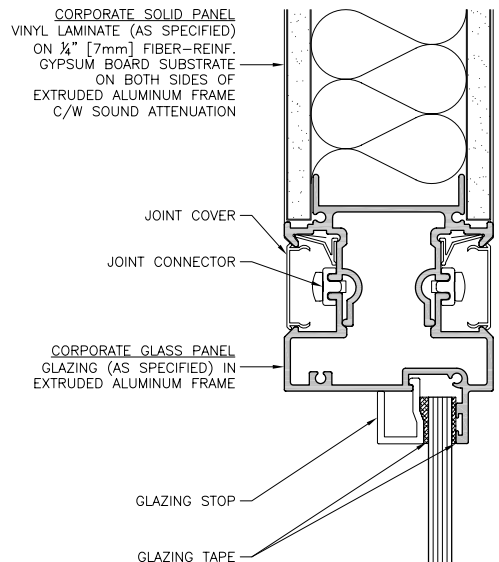
	ALUMINUM TOP CAP GLASS PANEL		DWG:
			8.2.2
FILE: 8-2.DWG	SCALE: 1 : 1	DATE: JAN 2003	
© PSL PARTITION SYSTEMS LTD. UNAUTHORIZED USE OF THIS DRAWING IS PROHIBITED.			



	ALUMINUM TOP CAP DOOR PANEL		DWG:
			8.2.3
FILE: 8-2.DWG	SCALE: 1 : 1	DATE: JAN 2003	
© PSL PARTITION SYSTEMS LTD. UNAUTHORIZED USE OF THIS DRAWING IS PROHIBITED.			



	STACKED PANEL SOLID ABOVE SOLID		DWG:
			8.3.1
FILE: 8-3.DWG	SCALE: 1 : 1	DATE: JAN 2003	
© PSL PARTITION SYSTEMS LTD. UNAUTHORIZED USE OF THIS DRAWING IS PROHIBITED.			



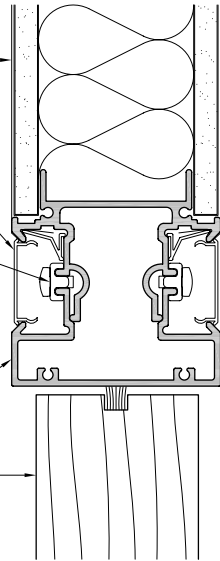
	STACKED PANEL SOLID ABOVE GLASS		DWG:
			8.3.2
FILE: 8-3.DWG	SCALE: 1 : 1	DATE: JAN 2003	
© PSL PARTITION SYSTEMS LTD. UNAUTHORIZED USE OF THIS DRAWING IS PROHIBITED.			

CORPORATE SOLID PANEL
VINYL LAMINATE (AS SPECIFIED)
ON 1/4" [7mm] FIBER-REINF.
GYPSUM BOARD SUBSTRATE
ON BOTH SIDES OF
EXTRUDED ALUMINUM FRAME
C/W SOUND ATTENUATION

JOINT COVER
JOINT CONNECTOR

EXTRUDED ALUMINUM FRAME

CORPORATE DOOR PANEL
1-3/4" [44mm] DOOR SLAB
C/W HARDWARE (AS SPECIFIED)



STACKED PANEL
SOLID ABOVE DOOR

DWG:

8.3.3

FILE: 8-3.DWG

SCALE: 1 : 1

DATE: JAN 2003

© PSL PARTITION SYSTEMS LTD.

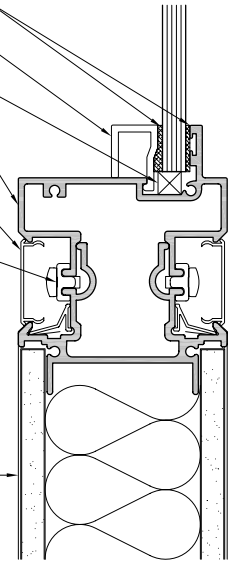
UNAUTHORIZED USE OF THIS DRAWING IS PROHIBITED.

GLAZING TAPE
GLAZING STOP
SETTING BLOCK

CORPORATE GLASS PANEL
GLAZING (AS SPECIFIED) IN
EXTRUDED ALUMINUM FRAME

JOINT COVER
JOINT CONNECTOR

CORPORATE SOLID PANEL
VINYL LAMINATE (AS SPECIFIED)
ON 1/4" [7mm] FIBER-REINF.
GYPSUM BOARD SUBSTRATE
ON BOTH SIDES OF
EXTRUDED ALUMINUM FRAME
C/W SOUND ATTENUATION



STACKED PANEL
GLASS ABOVE SOLID

DWG:

8.3.4

FILE: 8-3.DWG

SCALE: 1 : 1

DATE: JAN 2003

© PSL PARTITION SYSTEMS LTD.

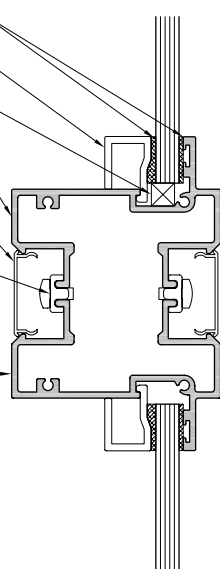
UNAUTHORIZED USE OF THIS DRAWING IS PROHIBITED.

GLAZING TAPE
GLAZING STOP
SETTING BLOCK

CORPORATE GLASS PANEL
GLAZING (AS SPECIFIED) IN
EXTRUDED ALUMINUM FRAME

JOINT COVER
JOINT CONNECTOR

CORPORATE GLASS PANEL
GLAZING (AS SPECIFIED) IN
EXTRUDED ALUMINUM FRAME



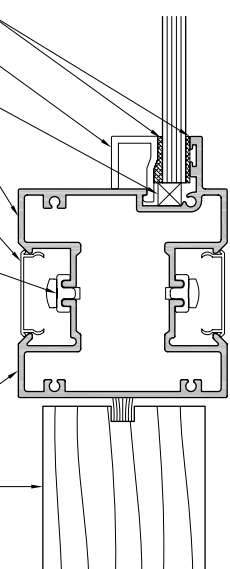
GLAZING TAPE
GLAZING STOP
SETTING BLOCK

CORPORATE GLASS PANEL
GLAZING (AS SPECIFIED) IN
EXTRUDED ALUMINUM FRAME

JOINT COVER
JOINT CONNECTOR

EXTRUDED ALUMINUM FRAME

CORPORATE DOOR PANEL
1-3/4" [44mm] DOOR SLAB
C/W HARDWARE (AS SPECIFIED)



STACKED PANEL
GLASS ABOVE GLASS

DWG:

8.3.5

FILE: 8-3.DWG

SCALE: 1 : 1

DATE: JAN 2003

© PSL PARTITION SYSTEMS LTD.

UNAUTHORIZED USE OF THIS DRAWING IS PROHIBITED.



STACKED PANEL
GLASS ABOVE DOOR

DWG:

8.3.6

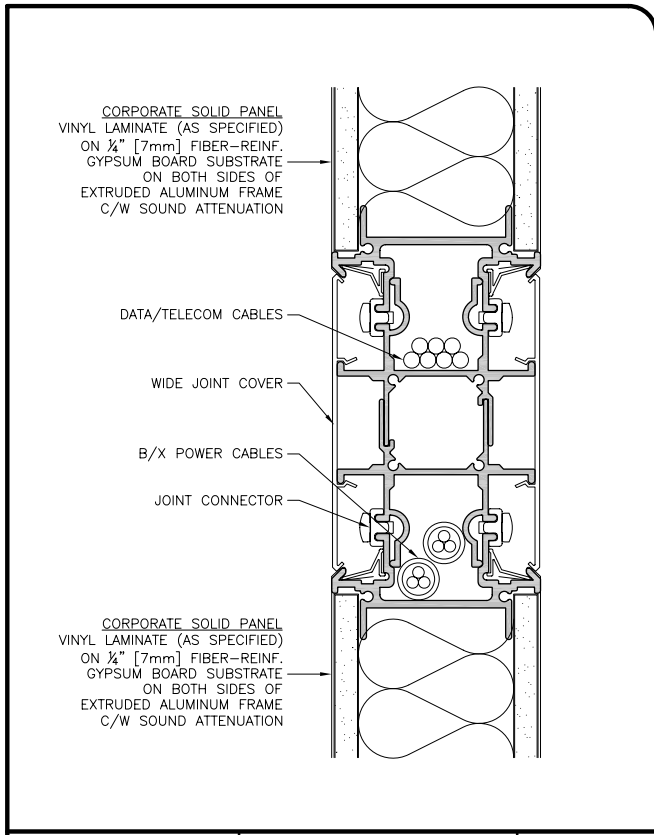
FILE: 8-3.DWG

SCALE: 1 : 1

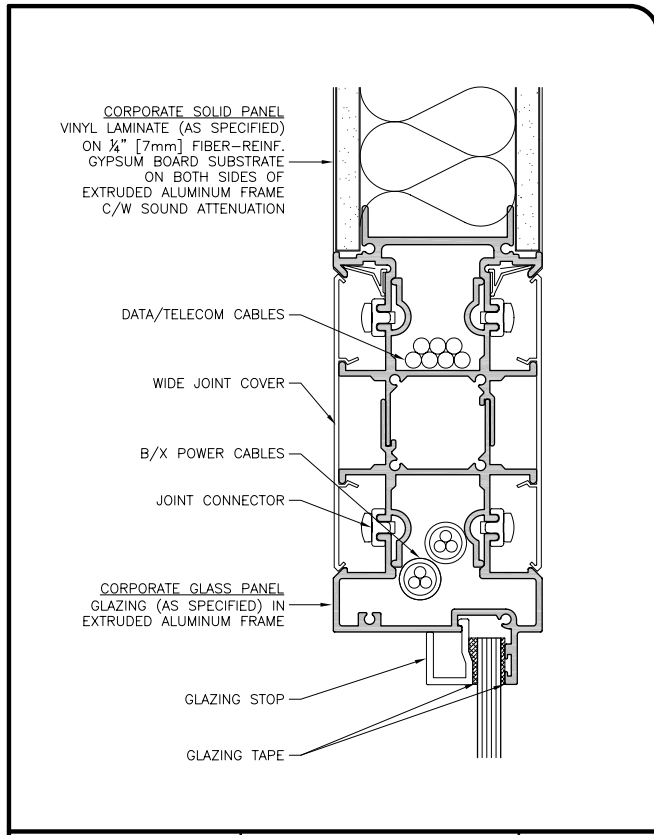
DATE: JAN 2003

© PSL PARTITION SYSTEMS LTD.

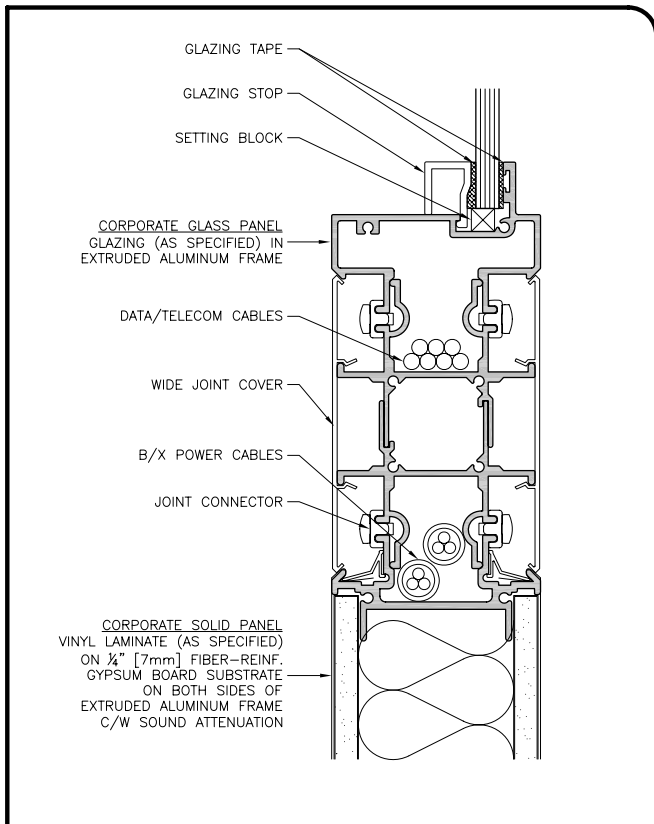
UNAUTHORIZED USE OF THIS DRAWING IS PROHIBITED.



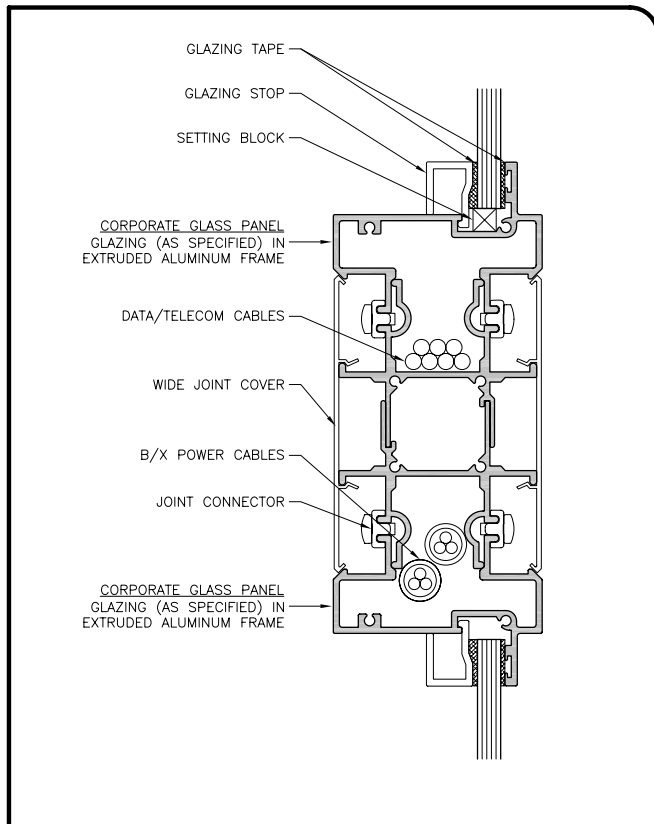
	INTERMEDIATE HEIGHT ELECTRICAL CHASE SOLID - SOLID	DWG:	8.4.1
		FILE: 8-4.DWG	
© PSL PARTITION SYSTEMS LTD.		UNAUTHORIZED USE OF THIS DRAWING IS PROHIBITED.	



	INTERMEDIATE HEIGHT ELECTRICAL CHASE SOLID - GLASS	DWG:	8.4.2
		FILE: 8-4.DWG	
© PSL PARTITION SYSTEMS LTD.		UNAUTHORIZED USE OF THIS DRAWING IS PROHIBITED.	



	INTERMEDIATE HEIGHT ELECTRICAL CHASE GLASS - SOLID	DWG:	8.4.3
		FILE: 8-4.DWG	
© PSL PARTITION SYSTEMS LTD.		UNAUTHORIZED USE OF THIS DRAWING IS PROHIBITED.	



	INTERMEDIATE HEIGHT ELECTRICAL CHASE GLASS - GLASS	DWG:	8.4.4
		FILE: 8-4.DWG	
© PSL PARTITION SYSTEMS LTD.		UNAUTHORIZED USE OF THIS DRAWING IS PROHIBITED.	